



Constructing Excellence Awards 2024

WELCOME

A very warm welcome to this, our 16th National Constructing Excellence Awards. These awards are a very special showcase of excellence in the built environment across England and Wales, bringing together the eight regional winners in each of thirteen categories to celebrate the very best of the best.

A more stable political environment and clarity on investment in housing, social and economic infrastructure should drive more confidence across the construction sector. The principles of Constructing Excellence remain as relevant as ever and many of the projects and organisations showcased this evening demonstrate the need to focus on continuous improvement and collaboration to deliver a better built environment. The long-term future of our industry relies on embracing these principles including focussing on outcomes, collaboration, climate action and digitalisation. Through the Constructing the Gold Standard Verification Scheme we are actively driving better outcomes through public sector procurement.

These awards play an important role to recognise and inspire high performance in the sector. An extensive review of the categories and entry forms has delivered a more

streamlined set of awards that more accurately reflect the great work going on across the Constructing Excellence Movement and wider industry. They paint an impressive picture of excellence and continued improvement right across the country.

Constructing Excellence will be working with all the winners to inspire others and drive best practice right across the sector. We hope that the projects and themes on show will inspire you to engage more with our movement. Please come and join the national organisation - as well as getting more involved regionally and of course encourage your emerging talent to engage with Generation4Change. Your sector and Constructing Excellence need you!

Mark Farmer, Cast Consultancy
David Whysall, Turner & Townsend
Phil Wilbraham, Keltbray Group



Please scan for
seating information

PROGRAMME

Drinks Reception

Welcome

Awards 2024

Dinner

Awards 2024

Carriages

MENU

Starters

Somerset brie & truffle tart, elderberry gel, watercress mayo (V)

Mains

Balsamic & thyme chicken, grilled courgette, roast radicchio, pea risotto cake
Black rice risotto, carrot ribbons, shaved fennel, vegan cheese, spinach sauce (VG)

Dessert

Warm lemon steamed pudding, lemon sorbet, chantilly, seasonal fruit compote

Tea/coffee and petit fours



Wales
Aleena Khan, AtkinsRealis



West Midlands
Alice Wilkes, AtkinsRealis



South East
Ceire Kenny, Lendlease



East Midlands
Eloise Warriner, AtkinsRealis



North West
Kevin Fletcher, RECOM Solutions



North East
Laura Frost, Turner & Townsend



East
Liv Bradley, Norwich City College



Yorkshire & Humber
Katy Robinson, East Riding of Yorkshire Council



South West
Megan Llewellyn, Willmott Dixon

INTEGRATION & COLLABORATIVE WORKING



East

The Bedford Borough Council Schools Programme



North East
BIOS



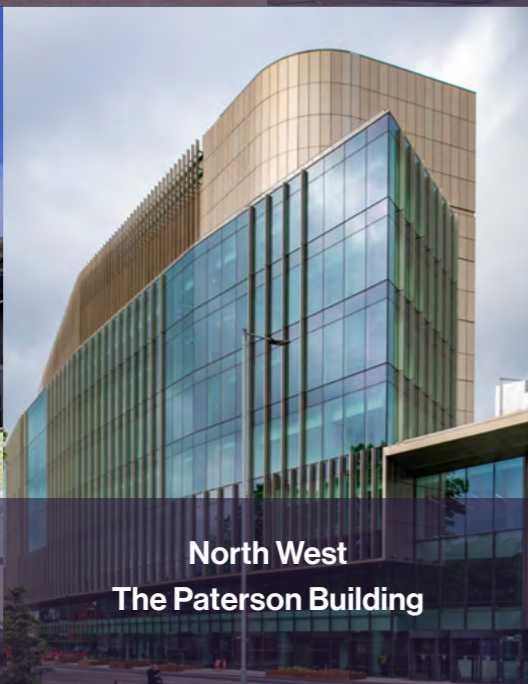
South West
Forest of Dean Community Hospital



East Midlands
Millside Spencer Academy



West Midlands
Next Generation Security Project
- Birmingham Airport



North West
The Paterson Building



Wales
Satellite Radiotherapy Unit



Yorkshire & Humber
Scarborough Hospital's New
Urgent & Emergency Care Project



South East
Ventnor Eastern Esplanade Urgent Works

PEOPLE & CULTURE



Yorkshire & Humber
Britcon



South West
Building Plymouth Aspiring Rising Talent Network



East
Canham Consulting Limited



North West
Eco Providers



South East
Danny Sullivan Group



Wales
Jubb Consulting Engineers Ltd



North East
MGL Group



West Midlands
Speller Metcalfe



East Midlands
Waldeck Consulting



Wales
Andrew Scott Ltd



South West
AWW



South East
ESG strategy for Oxford United Football Club



North East
MGL Group's Commitment to Environmental,
Social, And Governance



East
Morgan Sindall



North West
Reimagining the Harris Museum



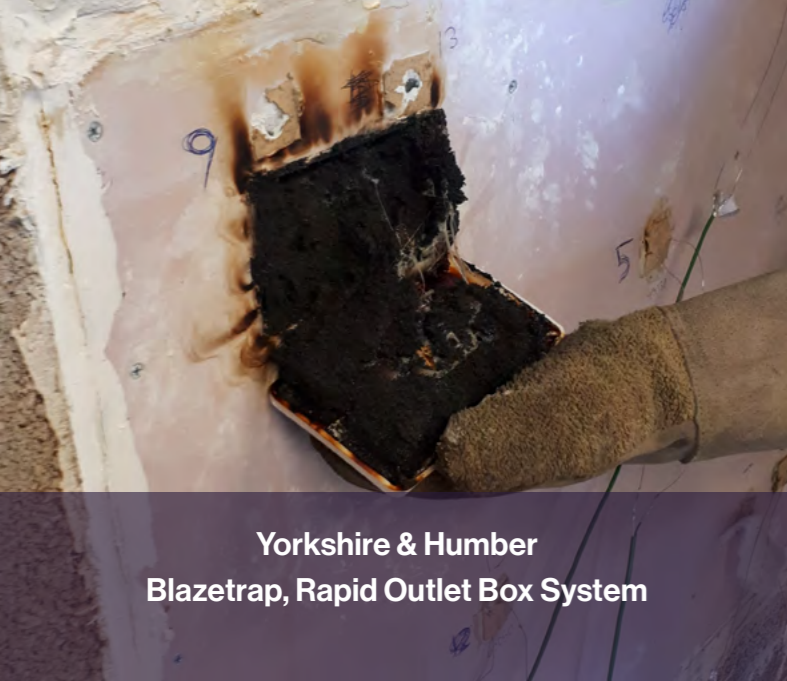
Yorkshire & Humber
Rider Levett Bucknall UK Ltd



East Midlands
Smith Brothers

INNOVATION

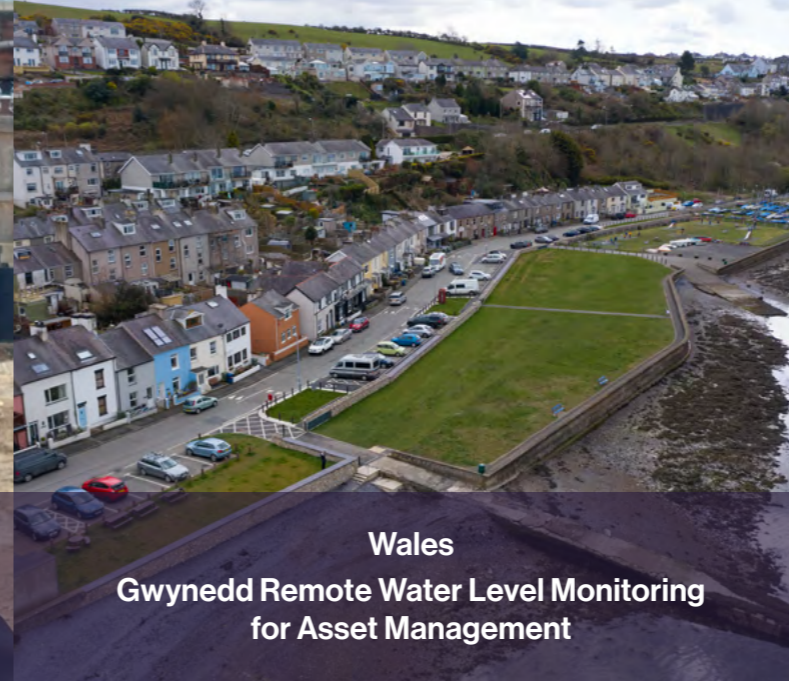
supported by  **Constructing Excellence
North East**



Yorkshire & Humber
Blazetrap, Rapid Outlet Box System



North West
Carbon Reduction Initiative



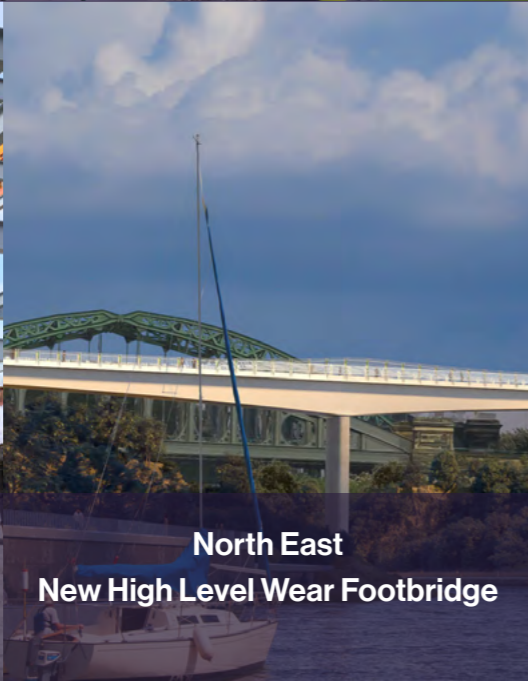
Wales
Gwynedd Remote Water Level Monitoring
for Asset Management



South West
Holistic Retrofit Solutions
- Window Insulation Coating



East
Morgan Sindall Construction
and Essex County Council



North East
New High Level Wear Footbridge



West Midlands
ONE Creative Environments Ltd



East Midlands
Panoptic Bridge Management



South East
Washbox Global



Yorkshire & Humber
Adept Civil and Structural Consulting Engineers



North East
Apex Acoustics Ltd



East Midlands
Concorde BGW Group



North West
Conlon Construction



South West
Coreus Group



South East
Edgars



Wales
Evans Electrical Ltd



West Midlands
Pulse Consult



East
RDT Architects

DELIVERING VALUE



South East
Bloxham Grove Academy



Wales
Dragon Homes



North East
Durham Investigative Hub



Yorkshire & Humber
Knowl Park House



North West
Mallory and Irvine, Birkenhead



East
New Digital Building Assessment for Fire Stations



South West
St. Bernadette's Rugby Club



West Midlands
Stratford Riverside

CLIMATE ACTION



South East
11 Belgrave Road, London Victoria



East
Buntingford First School



Yorkshire & Humber
The Climate Innovation District



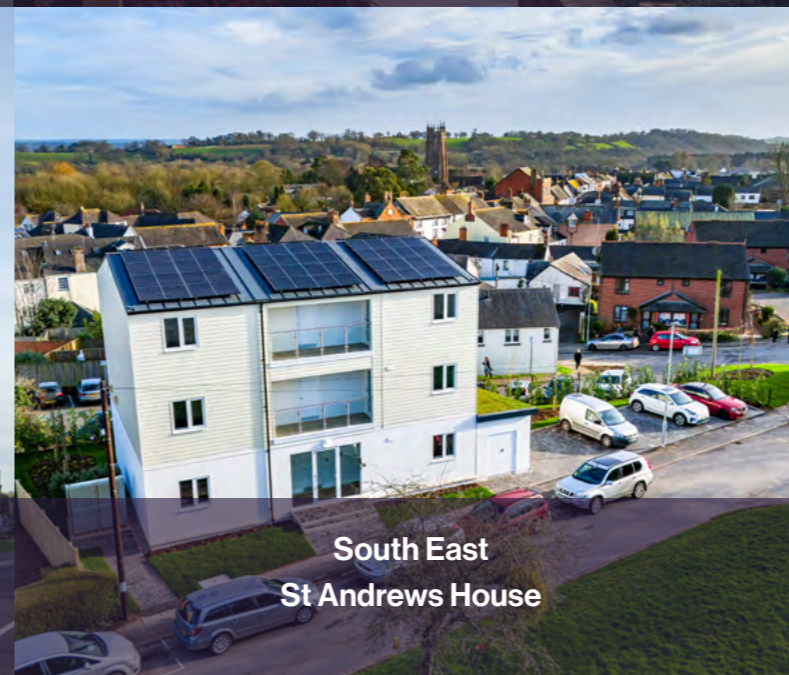
North West
Deyes High School – Climate Action Plan



Wales
Morlais



North East
Net Zero Industry Innovation Centre (NZIIC)



South East
St Andrews House



East Midlands
Smith Brothers

REGENERATION & RETROFIT



South West
Bristol Beacon



East
Building 84 & 85, Hangar Decarbonisation



North West
Fishwick Estate EWI Phase 1 & 2



East Midlands
Florence Boot Hall



Yorkshire & Humber
The Old Central Fire Station



Wales
Hafod Morfa Copperworks
Redevelopment



North East
The Pattern Shop



South East
Saltdean Lido



West Midlands
STEAMhouse for Birmingham City University

RESIDENTIAL PROJECT OF THE YEAR



East
Bowlers Green, Hopton-on-Sea



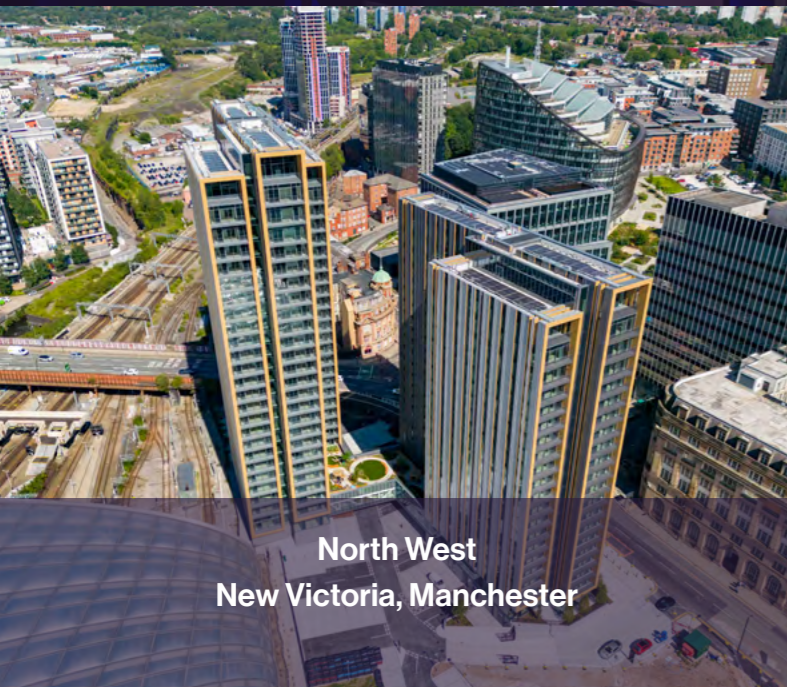
North East
Falmouth Close



South East
Gascoigne East Estate Regeneration Phase 2



South West
Millwright Place and Coopers Court



North West
New Victoria, Manchester



West Midlands
Old Heaton House



East Midlands
Springfield Mill, Sandiacre



Yorkshire & Humber
Tower Works, Leeds



Wales
Wood Street House,
Central Square, Cardiff

CLIENT OF THE YEAR



INFRASTRUCTURE PROJECT OF THE YEAR

supported by 



East
Herring Bridge



Yorkshire & Humber
Market Gate Pedestrian Bridge



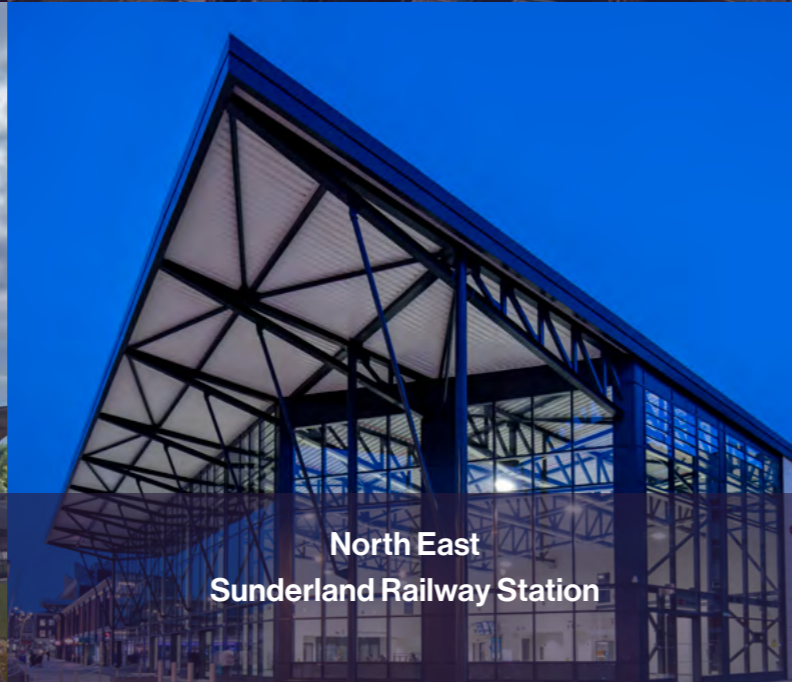
Wales
Morlais



South West
MRI and Oncology Unit, Royal Cornwall Hospital



North West
Stockport Interchange



North East
Sunderland Railway Station



West Midlands
University Station Redevelopment

BUILDING PROJECT OF THE YEAR

supported by 



East Midlands
Air and Space Institute (ASI) Newark



North East
BIOS



South West
Bristol Beacon



East
Fairview Pupil Referral Unit, Basildon



Wales
The Interchange,
Central Square, Cardiff



Manchester
MANCHESTER AQUATICS CENTRE

North West
Manchester Aquatic Centre



West Midlands
Molecular Sciences Building,
University of Birmingham



Yorkshire & Humber
One City Park, Bradford



South East
Platinum House: West Sussex Fire & Rescue
Service's Training Centre and Horsham Fire Station

