



Constructing Excellence Awards 2023

WELCOME

A very warm welcome to this our 17th National Constructing Excellence Awards. These awards are a very special showcase of excellence in the built environment across England and Wales, bringing together the eight regional winners in each of fifteen categories to celebrate the very best of the best.

Construction is going through a volatile period with a difficult economic and policy landscape. The principles of Constructing Excellence remain as relevant as ever and many of the projects and organisations showcased this evening demonstrate the need to focus on continuous improvement and collaboration to thrive in uncertain times. The long-term future of our industry relies on embracing these principles including collaboration, low carbon, MMC and digitalisation. Our recently launched Constructing the Gold Standard Verification Scheme will act as an engine to drive better outcomes through public sector procurement.

These awards play an important role to recognise and inspire high performance in the sector. They paint an impressive picture of excellence and continued improvement right across the country. Constructing Excellence will be working with all the winners to inspire others and improve performance right across the sector. We hope that the projects and themes on show will inspire you to engage more with our movement. Please come and join the national organisation - as well as getting more involved regionally. Your sector and Constructing Excellence need you!

Mark Farmer, Cast Consultancy
David Whysall, Turner & Townsend
Phil Wilbraham, Keltbray Group



Please scan for
seating information

PROGRAMME

Drinks Reception

Welcome

Awards 2023

Dinner

Awards 2023

Carriages

MENU

Starters

Lobster Risotto Café, Saffron Lobster Mayo, Tomato Citrus Salsa

Lime and Coriander Falafel, Squash & Cumin Puree,
Edamame with Chilli Jam (VG)*

Main Course

Saffron & Sumac Leg of Lamb, Polenta with Citrus Herbs,
Chilli Spinach and Roast Courgette

Roast Pumpkin, Fried Okra, Panko Crumbed Oyster Mushrooms
with Cajun Trinity Salsa and Butternut Squash Puree (V)*

Dessert

Passionfruit Cheesecake, Mango Chilli Salsa,
with Mango Sorbet and Lime Chantilly Cream

Tea/Coffee and Petit Fours

MATES IN MIND

Mates in Mind is a leading UK charity raising awareness and addressing the stigma of poor mental health. We promote and lead the way on the important development of a proactive and preventative approach to mental wellbeing within the workplace. Mates in Mind works across industries, focusing on construction, as well as related sectors including transport, logistics, manufacturing, and others.

Mates in Mind provides clear information to employers and teams about the available support and guidance on mental health and wellbeing. This includes how they can address this through proactive actions linked to cultural change, effective leadership, supportive line management, inclusivity and raising awareness and supportive processes across the whole workforce within their organisations.



donate
here



JUDGES

Adam Sanford – SCF Construct

Alex Small – Tata Steel Europe

Andreea Vihrestencu – asite

Andrew Thomas – Diligentia

Angharad Lloyd Beynon – City & Guilds

Bex Hodgson-Jones – Sir Robert McAlpine

Bill Hill – Lighthouse Club

Chris Clarke – Scape

Duncan Reed – Trimble

Elizabeth Painter – RWK Goodman

Eloise Francis – BRE Group

Flavie Lowres – Green Thinking

Gary O'Brien – CCLG

Hadi Kazemi – Leeds Beckett

Helen Baker – UWE

Jas Kalra – Manchester Metropolitan University

Joe Forde – BRE Group

John Adams – Glider Tech

John Orrell – DLA Design

Kevin Thomas – IPI Initiatives

Mark Beirne – CARA – EPS

Matthew Fletcher – Gosschalks

Odilon Serrano – Mott MacDonald

Penny Anderson – Akerlof

Rebecca Rees – Trowers & Hamlin LLP

Richard Wilks – Association for Project Safety

Sarah Meeks – Mates in Mind

Simon Murray

Simon Owen – Calibre Research

Steve Williams – Environment Agency

Vince Hanley – VH Procurement

G4C FUTURE LEADER



Nikita Badesha
West Midlands

employed by
Rider Levett Bucknall



Sarah Bolton
South East

employed by
Lighthouse
Construction Charity



Kelly Cartwright
East of England

employed by
Core Recruiter



Gemma Lancaster
East Midlands

employed by
Travis Perkins



Natalie Palframan
North West

employed by
Procure Partnership Framework



Charlotte Robson
North East

nominated by
Turner & Townsend



Dave Rossington
Wales

employed by
Powell Dobson Architects



Serena Williams
South West

employed by
Bouygues



Adam Wood
Y&H

employed by
River Levett Bucknall

INTEGRATION & COLLABORATIVE WORKING



A66 Northern Trans-Pennine North West
National Highways Limited, Balfour Beatty Civil Engineering Limited, Kier Highways Limited, Keltbray Limited

Day Treatment Centre North East
P+HS Architects, The Newcastle upon Tyne Hospitals NHS Foundation Trust (NUTH), Robertson Construction, CAD21, Gen North, Portland Consulting, DPP

MRC London Institute of Medical Sciences (LMS) Building South East
Medical Research Council, Walter Lilly, Hawkins\Brown, Turner & Townsend, Buro Happold and Curtins

Hybrid Theatre, Royal Derby Hospital East Midlands
Galliford Try Construction, Arup, University Hospitals of Derby and Burton NHS Foundation Trust, Selcon Construction Consultants, CMPG, RLB, TCQ Surveyors, Philips and Skanska

Interchange Multi-Storey Car Park West Midlands
Cundall Johnston and Partners LLP, Urban Growth Company, VINCI Construction UK Limited, Associated Architects, Burdus Access, Fira Landscape Ltd, WT Partnership, HS2 Ltd, Solihull Metropolitan Borough Council, Department for Transport and Arden Cross



Haverfordwest High Voluntary Controlled School & Sports Facilities Wales
Morgan Sindall Construction, Pembrokeshire County Council, Haverfordwest High VC School, Atkins, Whitehead Building Services, Pembrokeshire Leisure Services, AECOM, Dudleys Aluminium

NFM Sites Platform Digital tools for collaborative delivery Y&H
Mott MacDonald, Environment Agency, Leeds City Council, White Rose Forest, River Aire Trust

Two Rivers CofE Primary School South West
ISG Construction, Mott MacDonald, Department for Education (DfE), Futura Learning Partnership, Hatcher Prichard Ltd, Hydrock, Max Fordham, ACT Surveyors, Warm

University of Hertfordshire's SPECS Building Exemplary Collaboration East of England
Morgan Sindall Construction, AtkinsRealis, University of Hertfordshire, BDP Architecture, AECOM, ADP Architecture and TClarke

PEOPLE DEVELOPMENT



Andrew Scott Ltd

Wales



Carney Consultancy

North
East



Curtins

South
West



Hertfordshire Building Control

East



**HMP High Down -
Construction Mentorship
Partnering Programme**

South
East



Morrison Design Ltd

East
Midlands



**Putting People Development
First - DRG Interior &
Building Solutions Ltd**

West
Midlands



Tilbury Douglas

Y&H

HEALTH, SAFETY AND WELLBEING



Partnership-Illuminated Safety Walkway
BAM Construction, South Gloucestershire Council, FHOSS

South West

Collaborative Health, Safety & Wellbeing Ethos on HS2 Phase 2a
Arup, HS2, ERM, TEP, ADAS and Biocensus

Haverfordwest High VC School
Morgan Sindall Construction, Pembrokeshire County Council, Haverfordwest High VC School, Atkins, Whitehead Building Services, Pembrokeshire Leisure Services, AECOM, Dudleys Aluminium

Henry Boot Construction



Henry Boot Construction

Y&H

Home Safe and Well on A585 Windy Harbour to Skipool

Kier Highways, National Highways, WSP RPS, D Morgan, PHG Contracting Ltd, Aggregate Industries, Volker Fitzpatrick, R Betts Construction, Flannery Plant Hire

Tilbury Douglas Commitment to Health, Safety and Wellbeing

North East

SUSTAINABILITY



Ava Bridge East Midlands
Network Rail, Walker Construction, Expedition Engineering, Hawkins/Brown, SCX, MTC and Innovate UK

Dogger Bank Wind Farm Facility North East
DB Operational Base Ltd, Equinor New Energy Ltd, Bowmer+Kirkland, Ryder Architecture, Fairhurst, CBRE

Durley Chine Environmental Hub South West
Footprint Architects, BCP Council, WSP, WARM, Impact Acoustics, Partridge Associates, Peter Gunning & Partners LLP

Glebe Farm School - Milton Keynes' First Fossil Free School East
Morgan Sindall Construction, Milton Keynes City Council, Currie & Brown, Synergy, AECOM, Munro and Inspiring Futures through Learning (IFTL) family of schools

Harbourside Strategic Employment Site Wales
Andrew Scott, Neath Port Talbot CBC, WSP, Shillibiers



Low Crosby Flood Risk Management Scheme North West
VolkerStevin, Environment Agency, Jacobs, Holmeigate Farms Ltd, Waitings Ltd, Natural England, Carlisle City Council, Low Crosby Flood Action Group

Project 80 West Midlands
Midland Heart, Tricas, Birmingham City University & Building Alliance, Unilin, Oakley Architects, Besblock and BM3

Sewell Construction Limited Y&H

Ultra-Low Energy, Zero-Operational Carbon, Social-Rented Homes South East
Ashford Borough Council, ZED PODS, Dragon Heart Homes and DHA Planning

CONSERVATION & REGENERATION



The Bigg Market North East
 NE1, Historic Property Restoration, MawsonKerr Architects, Southern Green, James Christopher Consulting, Artis Consulting

The Birkin Building Regeneration Project East Midlands
 Spenbeck, Urban Fabric, McNeil Construction and Historic England

Cleveland Pools Restoration South West
 Beard Construction, Cleveland Pools Trust, Provelio, Edmond Shipley LLP, Hydrock, Donald Insall Associates

Lion Bridge, Burghley House East
 Purcell, Burghley House Preservation Trust, Historic Property Restoration, George James and Sons and Thornton Firkin

Lychgate Cottages 3-6 Priory Row, Coventry West Midlands
 Vagdia and Holmes Architects, Historic Coventry Trust, Messenger BCR, Chroma Consulting Project Managers, Ridge & Partners, FW Haywood and Greenways



The Plaza Redevelopment - Port Talbot Wales
 BAM Construction, GWP Architecture, Neath Port Talbot CBC, Hydrock, Asbri Planning, Vale CRW

Station Mews, Liverpool North West
 HMS, Torus Developments, HL Structural Engineers, HLP, Octave, Smartroof, Technix Mechanical and Electrical

Wiston Estate Winery South East
 ECE Architecture, Cheesmur Building Contractors, Manorwood, HOP Consulting, Robinson Low Francis

York Guildhall Y&H
 Burrell Foley Fischer, Arup, Turner & Townsend, SGA Consulting, City of York Council, Vinci

INNOVATION



Creating a Sustainable Alternative to Gypsum Plasterboard

Y&H

iKoustic Limited, Sundeala Limited, NappiCycle, Leeds Beckett University, University of Salford



MGL Group

North East



Gilbert and Goode Mining Innovation at Polgrean Place

South West

Gilbert & Goode, Ocean Housing, Fred Champion Groundworks, Groundsure, Saxton, Cornwall Council, Homes England



ONE Engage

ONE Creative Environments Ltd, Innovate UK and Totus Digital Limited

West Midlands



Oxburgh Hall

East

Rossi Long Consulting, National Trust, Purcell, Andrew Morton Associates, Philip Waller and Messenger BCR Group



Safety Shield is the Most Advanced AI Human Force Recognition

North West

Balfour Beatty, Bell Mining and Construction, MV Kelly, Lynch Plant Hire and Haulage



SBS Portal

East Midlands

Smiths Brothers Stores Ltd and Intact



Tempus - Temporary Fire Doors | Selo Doors Innovation

South East

Morgan Sindall Construction



ZED PODS Innovative Ultra-Low Carbon Modular Housing Development

Wales

ZED PODS, Linc Cymru Housing Association, Renelec Groundworks

VALUE



Chiltern Vale Health Hub and Residential Development

Willmott Dixon Construction, Central Bedfordshire Council, Penoyre & Prasad LLP, ECE Architecture and Conisbee

East



Day Treatment Centre

The Newcastle upon Tyne Hospitals NHS Foundation Trust, P+HS Architects, Robertson Construction, CAD21, Gen North, Portland Consulting, DPP Planning

North East



Graze 2 Dining & Educational Facility for Hartpury University & Hartpury College

Hartpury University & Hartpury College, Vitruvius Management Services, Barnwood Limited, Roberts Limbrick, Hydrock, Illman Young

South West



HMP High Down - Training Facility

Ministry of Justice, Galliford Try, HMP High Down, Carbon Plan, CTG Architects

South East



Land of Iron - The 'Room to Grow' Project to Redevelop the Cleveland Ironstone Mining Museum (CIMM)

Beaumont Brown Architects, Redcar and Cleveland Borough Council, The Cleveland Ironstone Mining Museum Trust, Billingham George & Partners, Civil & Structural Consulting Engineers, Hall and Partners, JHP, Services Engineers, Tolent Construction, The Cleveland Ironstone Mining Museum Trust, Redman Design, The Heritage Angel Ltd

Y&H



Station Mews, Allerton, Liverpool

HMS, Torus Developments, HL Structural Engineers, HLP, Octave, Smartroof, Technix Mechanical and Electrical

North West



Syklon Campus

Speller Metcalfe, NMITE (New Model in Technology and Engineering), Bond Bryan, Shires, Hybrid Structures, Hydrock and Osbornes

West Midlands



Welshpool Church in Wales Primary School

Architype, Powys County Council, Pave Aways Building Contractors, WSP

Wales



Bull Bridge Mead

Shooting Star, Magna Housing, Wiltshire Council, Rollalong, Taylor Lewis, SWPA/ LHC Procurement Group, Complex Asset Management Solutions

South West



Our Town Hall, Manchester

NG Bailey Limited, Manchester City Council, Lendlease

North West



The MFS i-Form Solution™

Masonry Frame Systems Ltd, Xella GmbH, H+H Celcon, LISSMAC Maschinenbau GmbH and Milbank Concrete Products Ltd

South East



Net-Zero Energy Retrofit MMC Solution

Melius Homes, Nottingham City Council, Energiesprung UK and Focus Consultants 2010 LLP

East Midlands



Refurbishment of existing modules to provide new Resource Centre at Fulbourn Hospital

Morgan Sindall Construction & Infrastructure Ltd, Cambridge & Peterborough Foundation NHS Trust, Murphy Phillips, Northmore Associates Ltd, Rossi Long and Sharman Grimwade

East



University of York Energy Centre

Tilbury Douglas, University of York, Mace, AtkinsRealis, NG Bailey, Race Cottam Associates

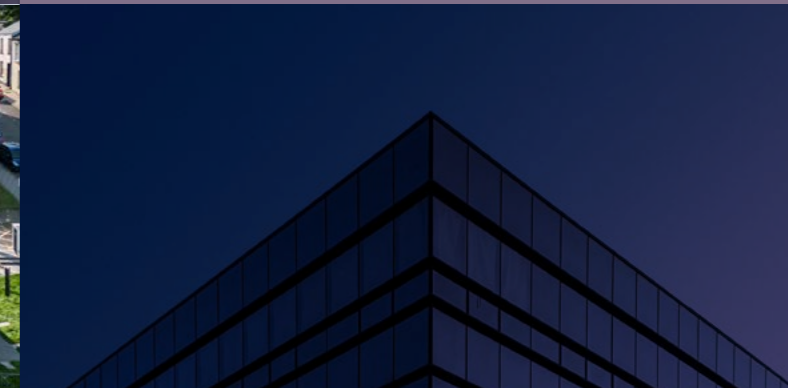
Y&H



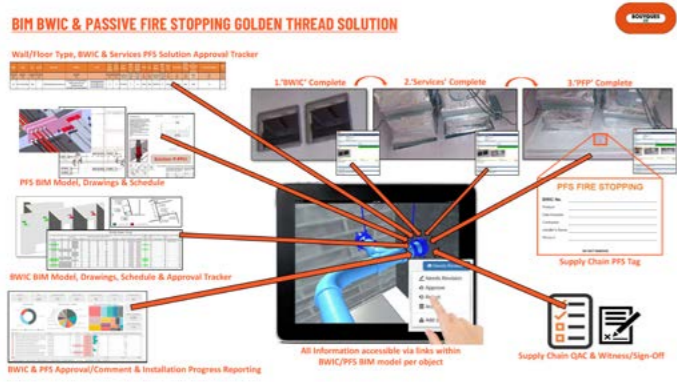
ZED PODS innovative ultra-low carbon modular housing

ZED PODS, Linc Cymru Housing Association, Renelec Groundworks

Wales



DIGITAL



BIM Builders Work & Passive Fire Stopping Golden Thread Solution Wales

Bouygues UK, Swansea Council, WSP, HMA, Hilti, CMB & Supply Chain, Auxilium Engineering Services, Thames Valley Construction

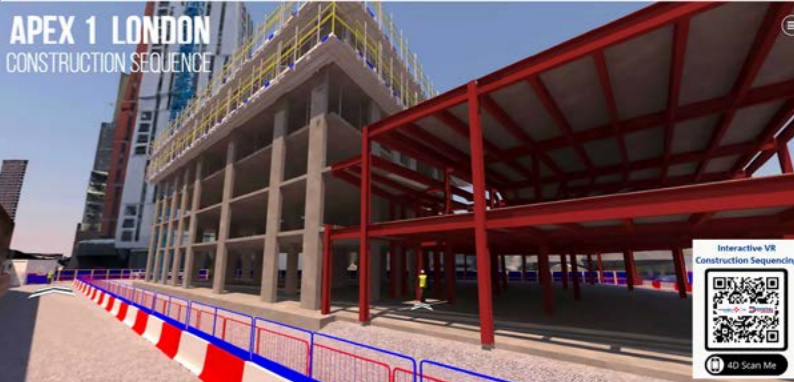
clixfix North East

Digital Solutions for Strategic Asset Investment Planning East Midlands

Arup and Environment Agency

Fire-BIM - Fire Performance Diagnostic Software Wales

Leeds Beckett University Enterprises Ltd, Innovation Fire BIM Ltd, P+HS Architects Ltd, CLM Building Control Consultancy Limited, Northstone Limited, University of Hertfordshire Higher Education Corporation, Anglestack Limited



Island, John Dalton Street North West

BIMBox, Bowmer+Kirkland, HBD

UHBW - Emergency Department Atrium Safe System of Work Digital planning South West

BAM Construction, University Hospitals Bristol and Weston NHS Foundation Trust, BAM Site Solutions, WSP UK Ltd, Lyndon SGB, Taunton Fabrications

UoB Digital Estate, Common Data Environment West Midlands

University of Birmingham, BIM and Digital Assets, Estates Office, University of Birmingham and Bentley Systems

Use of interactive VR to improve planning and site logistic South East

VINCI Building

NET ZERO



Y&H

Askern Leisure Centre Decarbonisation and Refurbishment

AtkinsRealis,
Doncaster Council



South
West

Decarbonising Diesel Generator (DG) Farms through Circular Economy

Babcock International



North
East

Dogger Bank Wind Farm Facility

DB Operational Base Ltd,
Equinor New Energy Ltd,
Bowmer+Kirkland,
Ryder Architecture,
Fairhurst, CBRE



East
Midlands

National Rehabilitation Centre

Arup, Nottingham University
Hospitals NHS Trust,
Ryder Architecture,
Osbornes Quantity Surveyors



Wales

Pen Y Dre High School NZC Refurbishment

Morgan Sindall Construction,
Merthyr Tydfil CBC,
Lawray Architects,
Cambria Consulting, WSP,
MM Sustainable Consulting



South
East

QE Class Logistics Centre, Portsmouth Naval Base

Royal Navy, BAE Systems,
Francis Construction,
Leonard Engineering Design
Consultants, West & West



Building our Future Together - Pave Aways

West Midlands

Britcon (UK) Limited

Y&H

The Castle Building Services Organisation

North East

F Parkinson

North West

HNW Architects

South East

KORI



Kori Construction Limited

East Midlands

Ministry of Furniture

Wales

Stomor Ltd

East

Ward Williams Associates

South West

RESIDENTIAL PROJECT OF THE YEAR



Blenheim Hall
John Rushbrooke,
SWB Architects,
Cotswold Oak Limited and
Ridgeways Quantity Surveying

West
Midlands

Canary Quay
R G Carter Ltd,
Ingleton Wood LLP,
Broadland Housing Association,
Broadland St Benedicts Ltd,
Rossi Long Consulting Ltd,
Richard Utting Associates LLP
and Bidwells LLP

East

**Denton & Hilltop
Degassing
Project**
Equans, Your Homes Newcastle

North
East

**Elderswell Village, supported
living village in Turvey**
SEC Newgate, Countryside
Partnerships and Inspired Villages

East
Midlands

New York Square, SOYO, Leeds
Caddick Construction, Moda Living,
Burohappold Engineering,
Richard Boothroyd & Associates Limited,
DLG Architects, Tate Consulting

Y&H



**Private Contemporary House,
Guildford**
Lytle Associates Architects,
Flint Construction, Doherty Energy,
Haworth McCall and MEA Consulting

South
East

Salford Passivhaus
Identity Consult, Salford City Council,
PRP Architect, Seddon Construction

North
West

St Mary's Apartment
56three Architects, M.R Allen Ltd,
Empiric Student Property,
Teign Consulting, Expedite,
Holloway Partnership

South
West

**ZED PODS innovative
ultra-low carbon modular
housing development**
ZED PODS, Renelec Groundworks,
Linc Cymru Housing Association,

Wales

CLIENT OF THE YEAR



Cardiff Council

Wales



London Borough of Southwark

South East



MHR Estates Development

East Midlands



Mid Devon District Council - Zero-Carbon Social Housing Schemes

South West



Newcastle upon Tyne Hospitals NHS Foundation Trust (NUTH)

North East



University of Salford

North West



University of Worcester

West Midlands



The University of York

Y&H

CIVILS PROJECT OF THE YEAR



Burnigill Bank Landslip

Durham County Council, Esh Construction, Atkins, Byland Engineering

North East



Cardiff Central Square

Knights Brown Construction, Cardiff Council, Arup, Welsh Government, Greenblue, Ryan Landscapes

Wales



Colliery Way (Formerly Gedling Access Road)

Balfour Beatty, Nottinghamshire County Council and Via East Midlands

East Midlands



East Leeds Orbital Route (ELOR)

Leeds City Council, Leeds City Council, Atkins, WSP, Knight Architects, Balfour Beatty

Y&H



Forder Valley Link Road

AECOM, Plymouth City Council, Balfour Beatty, WSP and SCAPE

South West



Mode Wheel Sluice Gate No.4 Replacement

Peel Ports, VolkerStevin, KGAL

North West



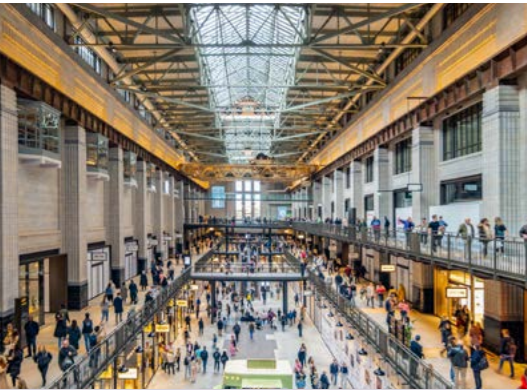
Northey Island Habitat Creation

Royal HaskoningDHV, The National Trust, Miles Water Engineering Ltd and Landbreach Limited

East



BUILDING PROJECT OF THE YEAR



Battersea Power Station Phase 2 South East
 WilkinsonEyre, Battersea Power Station Development Company, Buro Happold and Mace



Castle Park View South West
 Bouygues UK, Linkcity with M&G Estates, Abri Homes, Homes England and Bristol City Council, Chapman Taylor Associates, Arup



Hafan Yr Afon Wales
 Pave Aways Open Newtown, Building Contractors, Architype, Smith Thomas



Heartlands Treatment Centre, University Hospitals Birmingham NHS Foundation Trust West Midlands
 Kier Construction, Archus, Design Buro Architects, WSP, Couch Consulting, WT Partnership and Acivico



New York Square, SOYO, Leeds Y&H
 Caddick Construction, Moda Living, Burohappold Engineering, Richard Boothroyd & Associates Limited, DLG Architects, Tate Consulting



One Strawberry Lane North East
 Ask Real Estate Ltd, BAM Construction North East, Home Group, Ryder Architecture, AtkinsRealis, BGP Consulting Engineers, Shaw Construction Management, SES Engineering Services



Platinum Stages Elstree Studios East
 Hertsmere Borough Council, R G Carter Ltd, 4D Studio Architects, Baqus Construction & Property Consultancy, Elstree Studios, Gyoury Self Partnership, TClarke and Gillieron Scott Acoustic Design



Ravensdale Infant and Nursery School East Midlands
 Lungfish Architects, Derby City Council, Morgan Sindall Construction and SCAPE



University of Salford 'SEE Building' North West
 Morgan Sindall Construction, University of Salford, Sheppard Robson, North West Construction Hub, Arup, AtkinsRealis

