



**CONSTRUCTING
EXCELLENCE**
delivered with bre
AWARDS 2022

CONSTRUCTING EXCELLENCE
NATIONAL AWARDS

WELCOME

A very warm welcome to this our 15th National Constructing Excellence Awards.

These awards are a very special showcase of excellence in the built environment across England and Wales, bringing together the eight regional winners in each of fifteen categories to celebrate the very best of the best.



Please scan for
seating information

These awards play an important role to recognise and inspire high performance in the sector. They paint an impressive picture of excellence and continued improvement right across the country. This evening we recognise projects completed in 2021. Our finalists deserve a very special commendation for delivering excellence against a backdrop of COVID and its associated restrictions and challenges. The way the construction industry responded to this challenge was exceptional and all our finalists have excelled.

The disruption and challenges continue. Global uncertainty is driving inflation, disrupting supply chains and creating a skills shortage. The Construction Industry has been innovating like never before through initiatives like the Transforming Construction Challenge and the Construction Innovation Hub. The government through the

Construction Playbook and changes to procurement regulations wants to see this innovation deployed at scale. The Constructing Excellence movement has a huge role to play in the implementation of this transformation and tonight's winners and finalists showcase how we can go from Words into Action.

We hope that the projects and themes on show will inspire you to engage more with our movement. Constructing Excellence will be working with all the winners to inspire others and improve performance right across the sector. Please come and join the national organisation, get your young talent involved in Generation4Change as well as getting more involved regionally and locally. Your sector and Constructing Excellence need you!

Mark Farmer, Cast Consultancy
David Whysall, Turner & Townsend
Phil Wilbraham

PROGRAMME

CHAMPAGNE RECEPTION

INTRODUCTION

NATIONAL AWARDS 2022 - PART I

DINNER

NATIONAL AWARDS 2022 - PART II

CLOSING REMARKS

MENU

STARTER

Baked fillet of seabass, curry spiced butter, kachumba salad,
mint-yoghurt dressing

Caramelised red onion & Lancashire cheesecake, watercress mayonnaise (V)

MAIN

Guinea Fowl breast, celeriac, dauphinoise potatoes, savoy cabbage,
roast beetroot, red wine jus

Twice baked Lyburn Winchester & truffle soufflé, honeyed carrot ribbons,
grilled asparagus, watercress cream (V)

DESSERT

Blood Orange Cheesecake, macaroon, stem ginger Chantilly

Tea/Coffee and mints

LIGHTHOUSE CONSTRUCTION INDUSTRY CHARITY



The Lighthouse Construction Industry Charity is the only charity that

provides emotional, physical and financial wellbeing support to the construction community and their families. So far this year, the charity has supported 1,943 families in crisis with over £364,000 of charitable giving.

A crucial element of the charity's strategy is to provide a wide range of free and widely available pro-active resources to support the industry.

Find out more at
www.lighthouseclub.org

The charity provides a 24/7 Construction Industry Helpline which provides a range of free and confidential wellbeing support services and this is complemented by their free Construction Industry Helpline App, which offers expert guidance on a huge variety of wellbeing issues. They also offer a variety of free construction focused training programmes ranging

from hour long interactive wellbeing masterclasses through to the MHFA England approved Mental Health First Aider course. Their latest hard hitting campaign; Help Inside the Hard Hat, aims to raise awareness of mental health issues in our industry and signposts our construction community to the wide variety of support available.

How you can help

- Hold a Lighthouse Day - Dedicate a days fundraising for the Lighthouse Club.
- Become a Company Supporter - Pledge an annual donation to help provide a predictable and sustainable income for the charity.
- Order a Helpline Pack - Let your employees know where to turn to for support. Packs contain helpline posters and wallet size cards.
- Help Inside the Hard Hat -Join the campaign for better mental health by downloading your free posters and hoardings, Add your logo, take a photo and share on social media to help spread the word.



JUDGES

- | | |
|--|---|
| Adam Sanford - Hampshire County Council | Jas Kalra - Arcadis |
| Alex Small - Tata Steel Products | Joe Forde - BRE Group |
| Andreea Vihristencu - G4C National / Asite | John Adams - Glider Tech |
| Andrew Thomas - Diligentia | John Orrell - DLA Design |
| Anna Woods - Michael Mores | Jonathan Moulam - APS |
| Bex Hodgson-Jones - Sir Robert McAlpine | Kingsley Clarke - Devon County Council |
| Bill Hill - Lighthouse Club | Lydia McGuinness - G4C National / Wates |
| Carly Northwood - RIFT Group | Marcus Harling - Burges Salmon |
| Cheryl Causebrook | Matthew Fletcher - Gosschalks |
| Chris Clarke - Scape | Odilon Serrano - Mott MacDonald |
| Clive Johnson - Derwent London | Paul Greenwood - Greenwood Consultants |
| Debansu Das - ZED Pods | Penny Anderson - Akerlof |
| Dominic Doig - Solomons Europe | Phil Lloyd - Space Architects |
| Duncan Reed - Trimble | Rebecca Rees - Trowers |
| Elizabeth Painter - RWK Goodman | Sam Rees - RICS |
| Eloise Francis - BRE Group | Sarah Hawes - Hawes Construction Group |
| Flavie Lowres - Green Thinking | Seya Tansill - BRE Group |
| Gary O'Brien - CCLG | Simon Owen - Calibre Research |
| Hadi Kazemi - Leeds Beckett University | Steve Williams - Environment Agency |
| Helen Baker - University West England | Tom Oulton - Operance |
| Jane O'Leary - ISG Ltd | |

G4C FUTURE LEADER



Kirils Holstovs

Nominated by Institution of Civil Engineers

North East



Ben Pullen

Nominated by Atkins

Wales



Alina-Florentina Lighean

Nominated by Faithful+Gould

North West



Sophie Leake

Nominated by Speller Metcalfe

West Midlands



Nick Parish

Nominated by Tilbury Douglas Construction

East Midlands



Ellie Carswell

Nominated by Faithful+Gould

South East



Bradley Longford

Nominated by Henry Boot Construction

Y&H



Steve Morgan

Nominated by CGL

South West

INTEGRATION & COLLABORATIVE WORKING



Sunderland Strategic Transport Corridor Phase 3
North East
Esh Civils, Sunderland City Council and Capita

Ysgol Gynradd Gymraeg Tan-y-Lan
Wales
Kier Construction, Swansea Council, Stride Treglown, Hydrock

SY Homes Ltd
West Midlands
SY Homes Ltd, Qu-Est Architects, Porcelanosa, Build-Lite UK and BKNC Kitchens

Broad Marsh Bus Station and Car Park, Nottingham
East Midlands
Galliford Try Construction, Nottingham City Council, Faithful+Gould, Pick Everard, Leonard Design Architects, Stephen George & Partners and BWB

Denmark Hill Station Enhancements
South East
INVVU Construction Consultants, Govia Thameslink Railway, BAM Nuttall and Network Rail



The Dyson Building
East of England
Daniel Connal Partnership, Gresham's School, Kier Construction, Wilkinson Eyre, Sir James Dyson Foundation and North Norfolk District Council

Wharton Green, Verdin and Whitby Hall
North Wales
Cheshire West & Chester Council, EQUANS and QWEST

Red Kite View
Y&H
Tilbury Douglas Construction, Leeds and York Partnership NHS Foundation Trust, Leeds Community Healthcare NHS Trust, Community Ventures Ltd, Gilling Dod, Billinghamurst George & Partners, Services Design Associates, G&H Group, Slater Jackson and Ares Landscapes

George Parker Bidder Building (GrowOutBldg-3), Exeter Science Park
South West
Morgan Sindall Construction & Infrastructure, Exeter Science Park, NPS South West, LHC, Southern Construction Framework, Clarke Bond, Grainge Architects and SDS

PEOPLE DEVELOPMENT



Seymour Skills Academy

North East



Thames Valley Construction

Wales



Leading investment in local communities
Balfour Beatty Vinci

West Midlands



Pick Everard

East Midlands



David Miller Architects

South East



Kier Construction: Performance Excellence

North West



Hobson & Porter lays 'foundations' for construction's next generation

Y&H



CGL Career Path

South West

EQUALITY, DIVERSITY & INCLUSION



North East

Tilbury Douglas Construction

West Midlands

Balfour Beatty Vinci

Balfour Beatty



South East

Fuse Architects

Y&H

Kier Construction

Starting a sentence with 'I'm not racist but...' doesn't make what you are about to say ok.



South West

Kingston Barnes Ltd

NET ZERO

Sponsored by



Bay Technology Centre

Wales

Morgan Sindall Construction, Neath Port Talbot County Borough Council, IBI Group, Hydrock, The Urbanists



Net Zero Vanguard Building

West Midlands

Meole Brace - Read Construction Holdings Ltd, Shropshire County Council, TACP Architects, HLM Architects, Davies Partnership and JP Structural



NCH 2050 Homes

East Midlands

Melius Homes Limited, Nottingham City Council, Nottingham City Homes and Energiesprong UK



Zero-Carbon Social Housing Scheme

South East

ZED Pods and Bromley Council



Chester Community Fire Station

North West

Cheshire Fire Authority, ISG, North West Construction Hub, IKG Consulting, Bradshaw Gass & Hope LLP, Novo and T Clarke



Clifton Wetlands – transforming waste water management

Y&H

Yorkshire Water, BarhaleDoosan JV and Stantec



St Sidwell's Point

South West

Kier Construction, Exeter City Council, Randall Simmonds, Space & Place, Arup, Gale and Snowden, Warm and TClarke

CONSERVATION & REGENERATION



17Nineteen

Mosedale Gillatt Architects, Churches Conservation Trust, HPR Ltd, Hall & Partners Ltd, Blackett Ord Conservation Engineers and TGA Consulting

North East



Barmouth Viaduct Timber Renewal

Network Rail, Alun Griffiths (Contractors) Ltd

Wales



The Exchange - University of Birmingham

MGAC/RLF, University of Birmingham, Glancy Nichols Architects and Galliford Try (West Midlands)

West Midlands



Buxton Crescent Hotel and Thermal Spa Project

Trevor Osborne Property Group, Buxton Crescent Limited (JV Trevor Osborne Property Group and CP Holdings Ltd), Trevor Osborne Property Group, CP Holdings Ltd, Derbyshire County Council, High Peak Borough Council, Vinci UK and Fairbanks Heritage

East Midlands



British Academy of Film & Television Arts (BAFTA) HQ

Knight Harwood, Benedetti Architects, Equals, Jackson Coles, Harley Haddow, Price & Myers, Charcoal Blue, LAPD, Alan Baxter Heritage, Sandy Brown, DP9, Sweco and British Academy of Film & Television Arts (BAFTA)

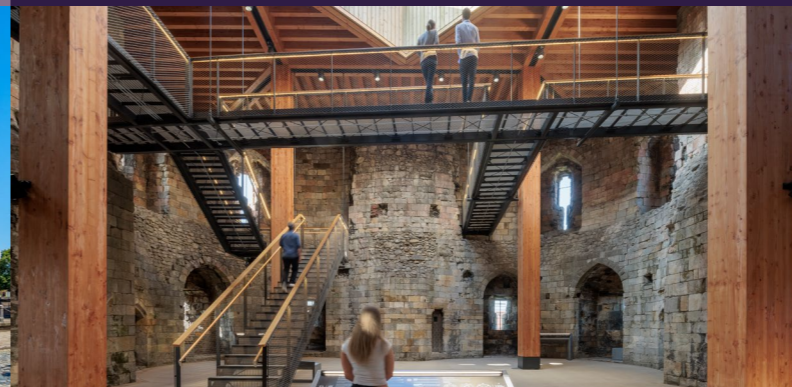
South East



Walker Art Gallery & Midland Railway Building

Krol Corlett Construction Ltd, National Museums Liverpool, Donald Insall Architects, Baker Mallett, Buro Four and Max Fordham

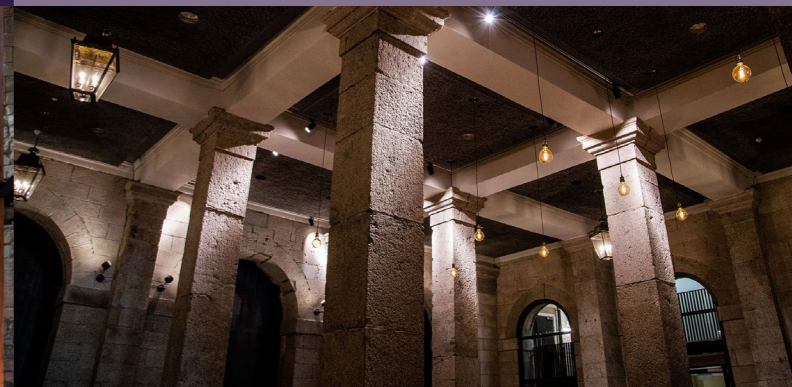
North West



Clifford's Tower

Simpson, English Heritage, Hugh Broughton Architects, Martin Ashley Architects (Conservation) and RNJ Partnership LLP

Y&H



Hall for Cornwall

Ward Williams Associates, Hall for Cornwall, Burrell Foley Fischer, Kier Construction and Currie and Brown

South West

HEALTH, SAFETY & WELLBEING



Real Employee Engagement & Wellbeing

Costain, National Highways and Jacobs

North East



Centre for Student Life, Cardiff University

BAM Construction Ltd, Cardiff University, AECOM, Currie & Brown, Fielden Clegg Bradley Studios, IBI Group, Arup, Thames Valley Construction

Wales



Tilbury Douglas Construction

West Midlands



Mental Health Matters

J McCann and Co Limited

East Midlands



Occupational Road Risk

FM Conway

South East



Russell WBHO: Accident Reduction by Education & Information Program

North West



Colas (Leeds) Mental Health Initiative

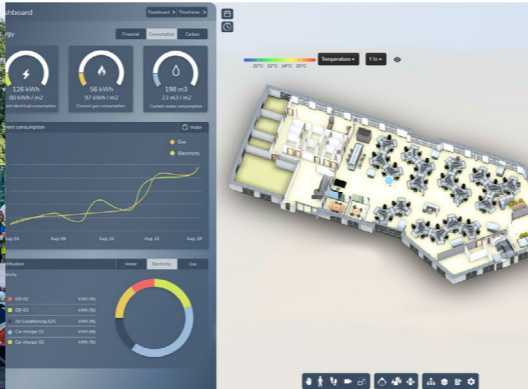
Y&H



Passive Fire Safety Measures

Taylor Lewis

South West



MGL Group North East

Siderise CT Cavity Tray Wales
Siderise Insulation Ltd

Digital Twins for effective Facilities Management West Midlands
ONE Creative Environments

Project Vinnie - Predictive Analytics in Health and Safety East Midlands
Galliford Try, Severn Trent and Newmetrix

Eco Park South Project - Ultra Low Carbon Concrete South East
Taylor Woodrow - part of VINCI Construction UK), North London Waste Authority, Ecocem and Cemex



Seismic - a new platform for construction East of England
LMC, Blacc, Tata Steel, Algeco, MTC, McAvoy Group, NCC and Specific

Cara EPS North West
Cara EPS, Greater Manchester Combined Authority, Procure Plus and IRT Surveys Ltd

Seismic - a new platform for construction Y&H
Seismic Consortium, LMC, blacc, Tata Steel, Algeco (formerly Elliott Group), MTC, McAvoy, NCC and Specific

Science Creates Old Market: scale up space for Bristol's innovation South West
Science Creates and Oxford Architects

VALUE



North
East

Elephant Rock

Hartlepool Borough Council,
Seymour Civil Engineering
and Classic Masonry



Wales

Grange Pavilion

Benham Architects,
Grange Pavilion CIO,
IBI Group, Mann Williams,
Holloway Partnership,
CDF Planning, Mott MacDonald,
The Urbanists



South
East

Birkbeck University of London, 373 Euston Road

Artelia Group, Birkbeck
University of London, Penoyre
& Prasad (now Perkins & Wills),
ARJ Construction, Mace,
Webb & Yates and
Skelly & Couch Ltd



North
West

Rochdale Public Sector Decarbonisation Scheme

EQUANS -
Rochdale Borough Council



Y&H

Mytholmroyd Flood Alleviation Scheme

Environment Agency, VBA,
a joint venture between
VolkerStevin Limited,
Boskalis Westminster and
SNC-Lavalin's Atkins business.



South
West

Taunton Diagnostics Centre

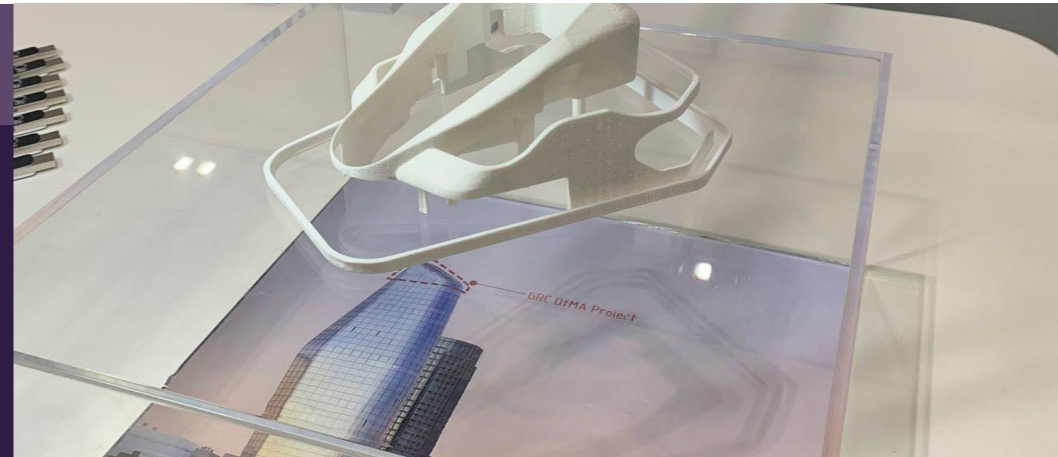
Kier Construction,
Rutherford Diagnostics,
North Somerset NHS Trust,
Totus and Equitex (South West)



Wales

Digital by Default at Fitzalan High School Cardiff

Kier Construction, Cardiff Council, Austin-Smith:Lord, AECOM, Jubb



West Midlands

BIM to DfMA pioneering workflow

ONE Creative Environments, St George City and Simplicity Finishes



South East

M25 Chamber Cover Renewals - GIS

Jackson Civil Engineering, TechJoint, Connect Plus Services, Atkins



North West

Four New Bailey Renewals

BIMBox, Bowmer+Kirkland, Make Architects, A&B Engineering, Cundall and Billington Structures Structal (UK) Ltd



Y&H

Aspire@ThePark

Willmott Dixon Construction, Wakefield Council, GT3 Architects, Watermans, ELM Building Services, FT Leisure and Arcadis

MODERN METHODS OF CONSTRUCTION



CoreHaus

North East



Crofts Street - a Cardiff Living Project

Wales

Wates, Cardiff Council, @Home, Rogers Stirk Harbour + Partners, AECOM



Nuspan Flooring

East Midlands



Zero-Carbon Social Housing Scheme

South East

ZED Pods and Bromley Council



The Lostock Sustainable Energy Plant Enabling Works

North West

TATA Chemicals Europe, Lostock Sustainable Energy Plant and SES Engineering Services



Seismic - a new platform for construction

Y&H

Seismic Consortium, LMC, blacc, Tata Steel, Algeco (formerly Elliott Group), MTC, McAvoy, NCC and Specific



Zero-Carbon Social Housing

South West

ZED PODS Ltd and Mid Devon District Council

SME



Black & White Engineering

North East



LCB Group

Wales



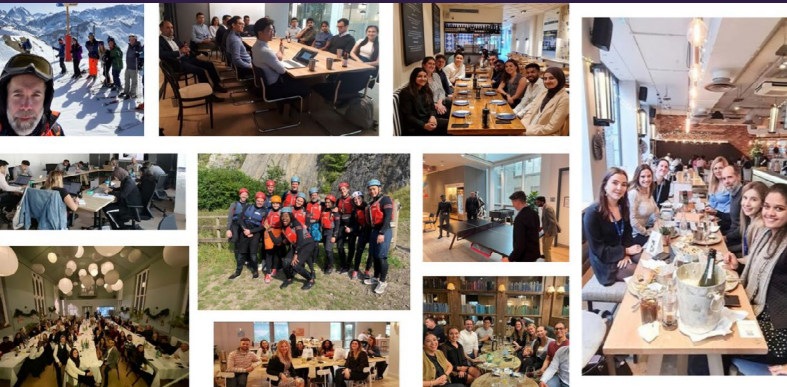
Calztec Limited

West Midlands



Akerlof

West Midlands



LOGIKAL

South East



M&Y Maintenance and Construction

North West



Mansfield Pollard

Y&H



John Grimes Partnership

South West

CLIENT OF THE YEAR



Sunderland City Council

North East



South Wales Police

Wales



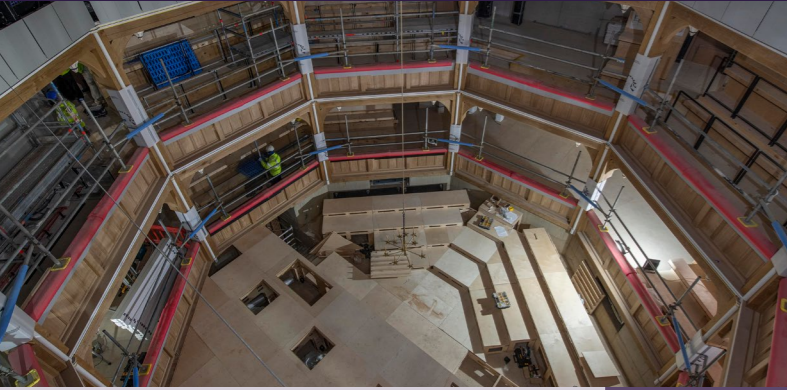
Cinnamon Care Collection

West Midlands



Wokingham Borough Council

South East



Knowsley Council

North West



Leeds City Council

Y&H



Gloucestershire County Council Asset Management & Property Services

South West

RESIDENTIAL PROJECT OF THE YEAR



Godwit House
 True North Construction Ltd,
 Mawson Kerr, PYC, North East Electrical,
 CA Heat Pumps, EcoHaus, Made2Measure
 and Gillian Maude

North
 East

Parc Eirin
 Morganstone Ltd, Pobl Group, Sero

Wales

Albury Place
 SY Homes Ltd, Qu-Est Architects,
 Porcelanosa, Build-Lite UK,
 BKNC Kitchens and Monk Properties

West
 Midlands

Springfields Independent Living
 Willmott Dixon Construction,
 emh Group, BRP Architects,
 Patrick Parsons Limited, Ridge & Partners Ltd
 and QODA Consulting Limited

East
 Midlands



Bradbury View
 Ridge & Partners LLP,
 Trinity Winchester, Bentley Projects
 and Hyphen

South
 East

Dart Square, Sheffield (Hillside House)
 56three Architects, CA Ventures,
 Robertson Construction, KR Developments,
 Quartz Project Services, Etive Consulting Engineers,
 March Consultants Limited, and Tigg Coll (Interior Design)

Y&H

The Yealm
 Grainge Architects,
 Red Earth Developments,
 Devon Contractors, QSPM Consultants,
 PCA Consulting Engineers and
 Hulley and Kirkwood

South
 West

CIVILS PROJECT OF THE YEAR



North East

A19 Testo's Junction Improvement Scheme

Costain, National Highways and Jacobs



Wales

Barmouth Viaduct Timber Renewal

Network Rail, Alun Griffiths (Contractors) Ltd



East Midlands

Severn Trent Eels Regulation Compliance

Galliford Try, Severn Trent Water, Hydrolox Engineered Polymer Screens, Spirac, M&N, Reds Engineering Services Divers, Northern Divers and Galliford Try Fabrications



North West

Runcorn Delinking and Station Quarter

Halton Borough Council, Balfour Beatty and Scape Civil Engineering and Infrastructure



Y&H

Hessle Foreshore Tidal Defence Scheme

Mason Clark Associates, East Riding of Yorkshire Council, Mason Clark Associates Ltd, Tilbury Douglas, National Highways and Esh Group



South West

Land East of Harry Stoke, Earthworks and Infrastructure Works

Churngold Construction Ltd, Wainhomes Ltd and South Gloucestershire Council

BUILDING PROJECT OF THE YEAR



The Regent, Redcar

BAM Construction North East, Redcar & Cleveland Borough Council, GT3 Architects, Fairhurst, Desco and Identity Consult

North East



Merthyr Tydfil Bus Interchange

WSP, Merthyr Tydfil County Borough Council, Morgan Sindall Construction, Welsh Government, Cardiff Capital Region

Wales



Houlton School, Rugby

Morgan Sindall Construction, Urban & Civic, Van Heyningen & Haward Architects, Department for Education, Price & Meyers, Transforming Lives Educational Trust, Warwickshire County Council and David Lock Associates

West Midlands



HMP Five Wells

Kier, Ministry of Justice, FP McCann, Bison Precast, Banagher Precast Concrete, ASSA ABLOY, PCE, Mace, Pick Everard, HLM, Arup, Curtins and WTP

East Midlands



Crosfields School

David Miller Architects, KLH, Engenuiti, Peregá, CBG Consulting, Madlins, Cahill Design Consultants and Beard Construction

South East



The Digi-Tech Factory, City College Norwich

RG Carter, City College Norwich, Coffey Architects, Clancy Consulting, REAL Consulting and CC and D

East of England



University of Salford - Energy House 2.0

Bowmer + Kirkland, University of Salford, AECOM, Bond Bryan, NG Bailey and Curtins

North West



Red Kite View

Tilbury Douglas Construction, Leeds and York Partnership NHS Foundation Trust, Leeds Community Healthcare NHS Trust, Community Ventures Ltd, Gilling Dod, Billingham George & Partners, Services Design Associates, G&H Group, Slater Jackson and Ares Landscapes

Y&H



St Sidwell's Point

Kier Construction, Exeter City Council, Randall Simmonds, Space & Place, Arup, Gale & Snowden, Warm and TClarke

South West

 **CONSTRUCTING
EXCELLENCE**
delivered with bre
AWARDS 2022

