



CONSTRUCTING EXCELLENCE

NATIONAL AWARDS 2020

FINALISTS



Headline Sponsor



29 January 2021

constructingexcellence.org.uk



WELCOME

A very warm welcome to this our 14th National Constructing Excellence Awards. These awards are a very special showcase of excellence in the built environment across England and Wales, bringing together the eight regional winners in each of fourteen categories to celebrate the very best of the best.

Constructing Excellence continues to be more relevant than ever. The response to COVID 19 and emerging policy and initiatives such as the Roadmap to Recovery, the Construction Playbook and the Construction Innovation Hub's Value Toolkit are very much welcomed by Constructing Excellence. There is clear alignment between these initiatives and our core values and vision. They will enable industry to invest in the solutions that will deliver on these progressive opportunities including MMC, increased standardisation, skills and digital ways of working. We cannot go back to the old ways of working. We must use this moment as a positive disruption to reinvent as a better industry that delivers better outcomes.

These awards play an important role to recognise and inspire high performance in the sector. They paint an impressive picture of excellence and continued improvement right across the country. Constructing Excellence will be working with all the winners to inspire others and improve performance right across the sector.

We hope that the projects and themes on show will inspire you to engage more with our movement. Please come and join the national organisation – as well as getting more involved regionally. Your sector and Constructing Excellence need you!

Mark Farmer, Cast Consultancy

David Whysall, Turner & Townsend

Phil Wilbraham, Independent



ABOUT CONSTRUCTING EXCELLENCE

Constructing Excellence is a platform from which to stimulate, debate and drive much needed change in the Construction sector. Our thought leading members from the entire supply chain – clients, industry and users – share a vision for change through innovation and collaboration.

Constructing Excellence is funded and governed nationally by corporate membership, and invites anyone who wants to be part of the change process to become active members.

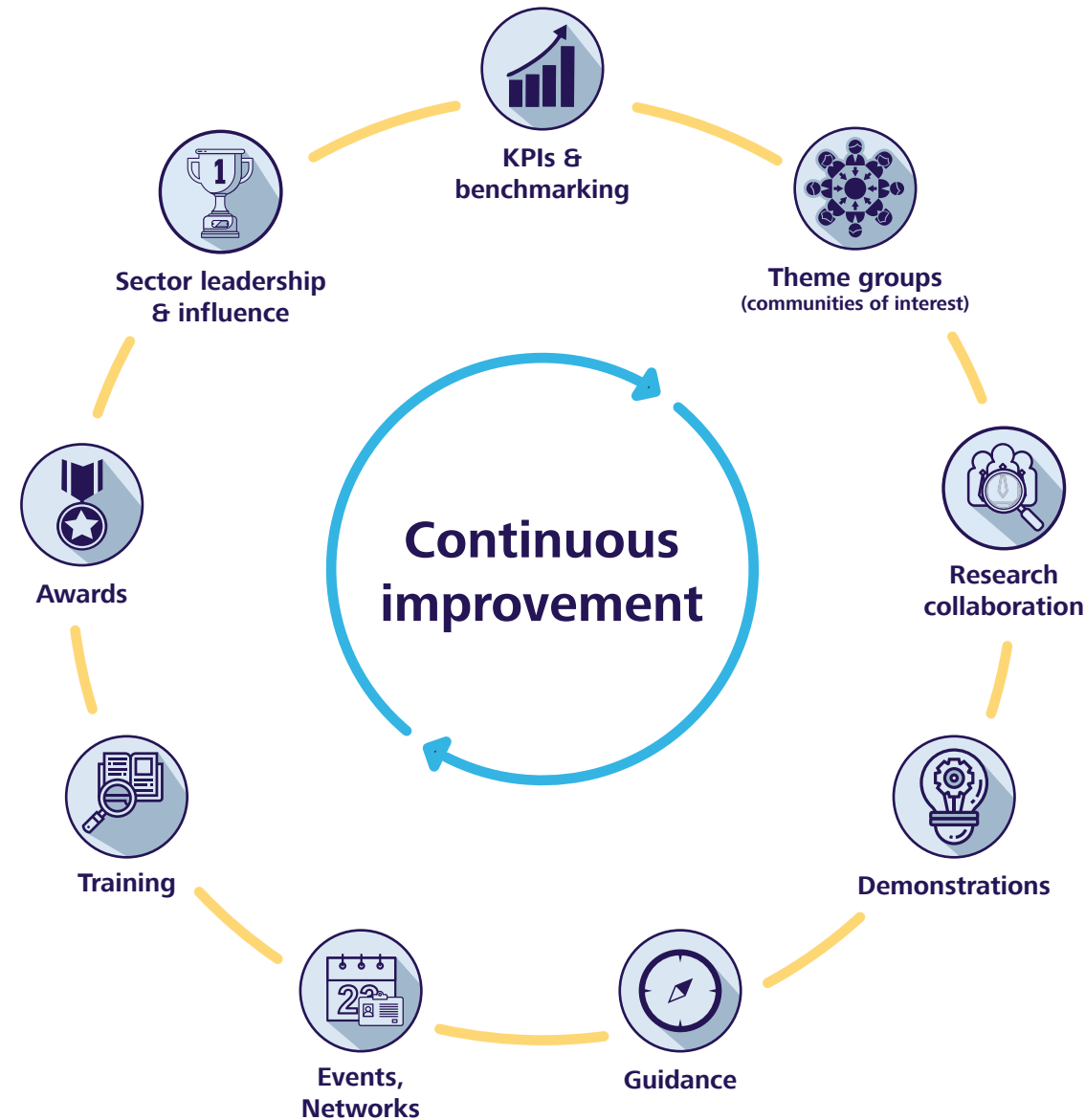
Our Mission

“Positively disrupting the industry delivery processes to transform performance.”

Our Vision

Superior outcomes from new delivery models featuring:

- A client-led transformation by procuring for outcomes and value
- Increased standardisation and pre-manufactured content
- Digitally enabled integrated teams working collaboratively with long-term relationships and aligned commercial arrangements



What we do

At Constructing Excellence we believe that industry improvement will be driven by all sectors sharing, learning, working together and driving innovation to deliver a demonstrably better built environment.

Get involved

Our members set our agenda and are the driving force behind our movement. Members use theme groups and forums to explore key issues that are impacting the industry and drive change. Please email helpdesk@constructingexcellence.org.uk for more information about joining Constructing Excellence.

“Constructing Excellence is a platform for industry improvement to deliver excellence through clients, industry and users through collaborative working.”

G4C FUTURE LEADER



Millie Demol

Organisation:
Willmott Dixon

Region:
London & South East



Wajiha Afsar (Jia)

Organisation:
Atkins

Region:
Wales



Najwa Jawahar

Organisation:
WSP

Region:
Yorkshire & Humber



Michael Broadhurst

Organisation:
Robert Woodhead Limited

Region:
East Midlands

[Click here for more information](#)

[Click here for more information](#)

[Click here for more information](#)

[Click here for more information](#)

breACADEMY®

Category Sponsor

Swegon

Headline Sponsor

G4C FUTURE LEADER



Kieran Duffy

Organisation:
Engie

Region:
North West



Francesca Wilkinson

Organisation:
Willmott Dixon

Region:
West Midlands



Eve Wilson

Organisation:
Turner & Townsend

Region:
North East



Callum Yeowell

Organisation:
Gilbert & Goode

Region:
South West

[Click here for more information](#)

[Click here for more information](#)

[Click here for more information](#)

[Click here for more information](#)



Category Sponsor



Headline Sponsor

INTEGRATION &
COLLABORATIVE WORKING

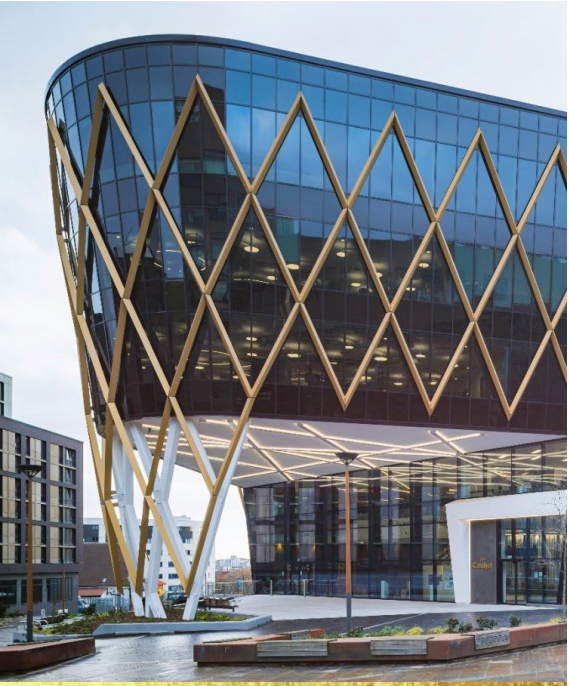


**Project Kale – Healthy Collaboration.
Shell 600 Programme**

Organisation:
Artelia

Region:
London & South East

[Click here for more information](#)



The Catalyst

Organisations:
Bowmer + Kirkland, Newcastle University, UK
National Innovation Centre for Ageing, National
Innovation Centre for Data

Region:
North East

[Click here for more information](#)



Sister Dora Skills & Simulation Suite

Organisations:
Speller Metcalfe, University of Wolverhampton
(CLIENT), Broadway Malyan (ARCHITECT), Faithful
and Gould (UNIVERSITY PROJECT MANAGER),
Gleeds (CONTRACT ADMINISTRATOR), Cundalls
(STRUCTURAL ENGINEER), Trad Structures (STEEL
SUB-CONTRACTOR), Couch Perry Wilkes (M&E
CLIENT SIDE)

Region:
West Midlands

[Click here for more information](#)



Shire Hall

Organisations:
Kier Construction Central, Gloucestershire County
Council, Quattro Design Architects, Adams
Fletcher & Partners

Region:
South West

[Click here for more information](#)



CONSTRUCTION
INNOVATION HUB

Category Sponsor



Swegon

Headline Sponsor

INTEGRATION &
COLLABORATIVE WORKING



New Build Prison at Wellingborough

Organisations:

Kier, Ministry of Justice, Kier, PCE, FP McCann, Bison Precast, Banagher Precast, Curtins

Region:

East Midlands

[Click here for more information](#)



M4 Celtic Manor Overbridge

Organisations:

Alun Griffiths (Contractors) Ltd, Celtic Manor Resort, Lewis and Lewis, AECOM, Curtins

Region:

Wales

[Click here for more information](#)



British Army Training Unit Kenya (BATUK)

Organisations:

Tetra Tech (former WYG), Defence Infrastructure Organisation (DIO), G3 Systems Ltd, Trax Kenya Ltd

Region:

Yorkshire & Humber

[Click here for more information](#)



Alliance Partnership to deliver 'state of the art' facilities for pharmaceutical warehousing, packing and logistics – AstraZeneca and BES

Organisations:

BES Ltd and AstraZeneca

Region:

North West

[Click here for more information](#)



Category Sponsor



Headline Sponsor

INTEGRATION &
COLLABORATIVE WORKING



Campus Whitehaven

Organisation:
Wates Construction Ltd

Region:
North West

[Click here for more information](#)



Category Sponsor

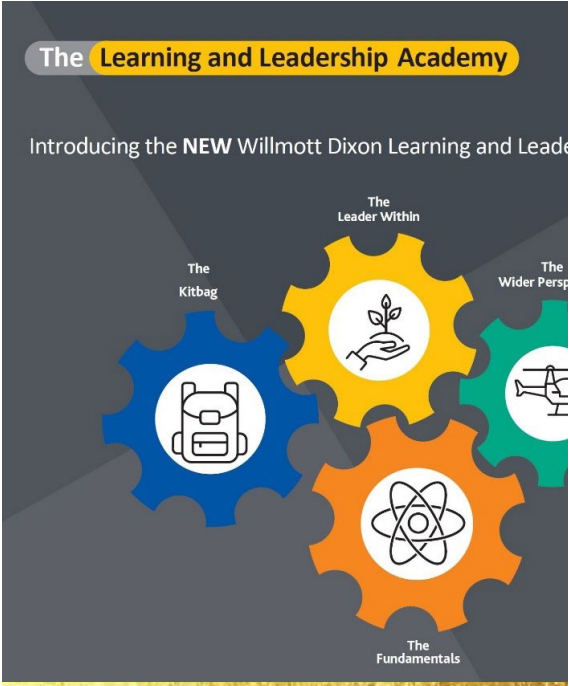


Headline Sponsor

PEOPLE DEVELOPMENT



Headline Sponsor



Willmott Dixon

Organisation:
Willmott Dixon

Region:
East Midlands

[Click here for more information](#)

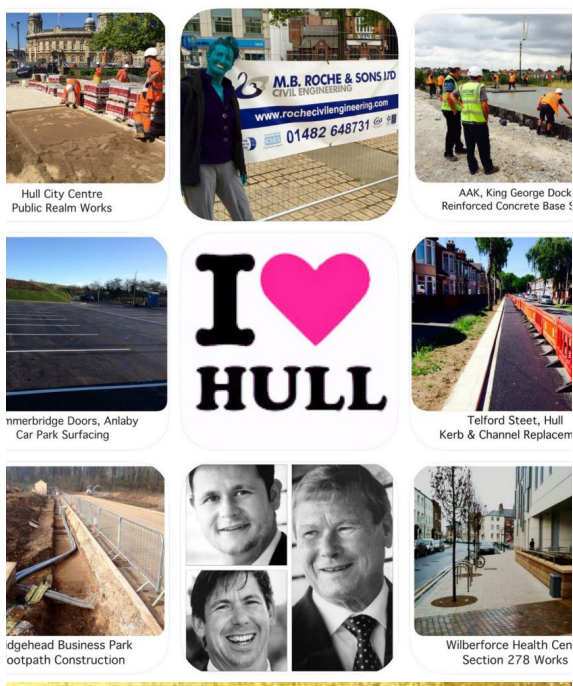


Walker Construction (UK) Ltd

Organisation:
Walker Construction (UK) Ltd

Region:
London & South East

[Click here for more information](#)



M.B.Roche & Sons Ltd

Organisation:
M.B.Roche & Sons Ltd

Region:
Yorkshire & Humber

[Click here for more information](#)



Krol Corlett Construction Ltd

Organisation:
Krol Corlett Construction Ltd

Region:
North West

[Click here for more information](#)

PEOPLE DEVELOPMENT



People Development

Organisation:
Esh Construction Ltd.

Region:
North East



ENGIE Learning and Development

Organisation:
ENGIE

Region:
West Midlands



Encon Construction: Career Changers – Women into Construction

Organisation:
Encon Construction

Region:
Wales



Headline Sponsor

[Click here for more information](#)

[Click here for more information](#)

[Click here for more information](#)

SUSTAINABILITY



Llanberis Flood Alleviation Scheme

Organisations:
YGC – Ymgynghoriaeth Gwynedd Consultancy, Gwynedd Council – Highways and Municipal Department, Alun Griffiths

Region:
Wales



The Catalyst

Organisations:
Bowmer & Kirkland, Newcastle University, Turner & Townsend, GSS Architecture, Design North, Gillespies, Studio Horn, Desco, NGBailey, JD Pierce, Charles Henshaw & Sons, Beal Architectural, BIMBox

Region:
North East



Tanworth Lane Dementia and Extra Care Unit

Organisations:
One Creative Environments Ltd, Solihull Metropolitan Borough Council, Speller Metcalfe

Region:
West Midlands



University of Sheffield Engineering Heartspace

Organisations:
Interserve Construction, University of Sheffield, Castle Owen, Bond Bryan, Turner & Townsend, Arup, Eastwood and Partners, Services Design Associates

Region:
Yorkshire & Humber



Headline Sponsor

[Click here for more information](#)

[Click here for more information](#)

[Click here for more information](#)

[Click here for more information](#)

SUSTAINABILITY



Seaton Beach

Organisations:
Seaton Beach Developments Ltd, Classic Builders (SW) Ltd, Gale & Snowden Architects, Randall Simmonds LLP, Fords South West Ltd, Allwood Buildings Ltd, Structurehaus

Region:
South West



Oundle School Sports Centre

Organisations:
Graham, Oundle School

Region:
East Midlands



Greatfields Zone 2

Organisations:
Mid Group, London Borough of Barking & Dagenham, Surface to Air Architects, Parmarbook Structural Engineers. EDP Environmental Engineers, Innovare, O’Keefe

Region:
London & South East



Headline Sponsor

[Click here for more information](#)

[Click here for more information](#)

[Click here for more information](#)

CONSERVATION
&
REGENERATION



The White Lion, Stockport

Organisations:
Bowker Sadler Architecture, Stockport Metropolitan Council, Trafford Housing Trust, Anderton Gables, Casey

Region:
North West



The Silverstone Experience

Organisations:
Cube Design, Silverstone Heritage Ltd., MAC Construction Consultants, Elmwood, Mann Williams, Illman Young Landscape Design, Mather and Co.

Region:
East Midlands



Exhibition London – Conversion and Restoration of a Grade-II Victorian Building

Organisations:
Unibail Rodamco Westfield, Broadwick Live Ltd, Unibail Rodamco Westfield (CLIENT)

Region:
London & South East



Primark Birmingham

Organisations:
3DReid, Primark, Mace Group, 3DReid Ltd, KMJM Consultants Ltd, TTG, WSP, Linesight

Region:
West Midlands



Headline Sponsor

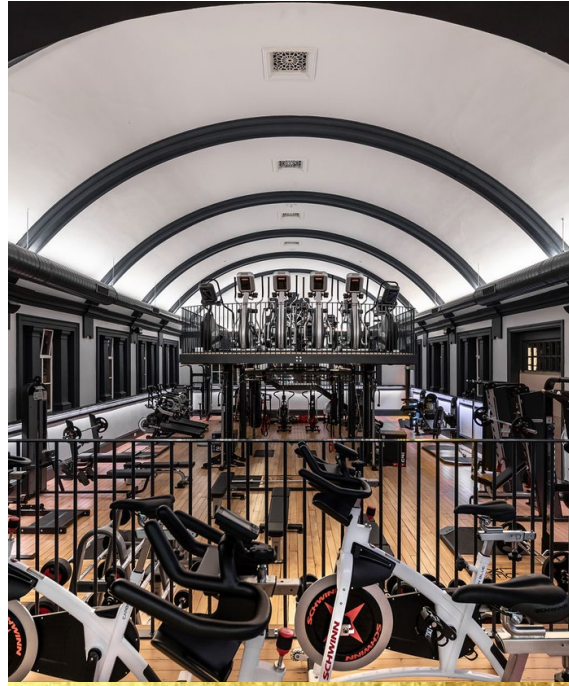
[Click here for more information](#)

[Click here for more information](#)

[Click here for more information](#)

[Click here for more information](#)

CONSERVATION & REGENERATION



LUXE Fitness

Organisations:

Design Storey Architects, LUXE Fitness, Mann Williams Consulting Civil & Structural Engineers, Cotswold Transport Planning, Acoustic Consultants Ltd, RL Leech, Oxford Architects, CSJ Planning

Region:

South West

[!\[\]\(003082e50e3009141f59bd5df831749f_img.jpg\) Click here for more information](#)



Hylton Castle

Organisations:

Beaumont Brown Architects, Hylton Castle Trust, William Birch and Sons Ltd, Buro Four, Northern Archaeological Associates, BDN (Building Design (Northern) Ltd), JHPartners, Thornton Firkin, Classic Masonry

Region:

North East

[!\[\]\(b4eeff342f60cc7bcd67d869b4fedca2_img.jpg\) Click here for more information](#)



Whitby Piers Coast Protection Scheme

Organisations:

Royal HaskoningDHV, Scarborough Borough Council, Mott MacDonald, Balfour Beatty

Region:

Yorkshire & Humber

[!\[\]\(bff896c19919791b89ab521f039b410a_img.jpg\) Click here for more information](#)



Headline Sponsor

HEALTH, SAFETY
& WELLBEING

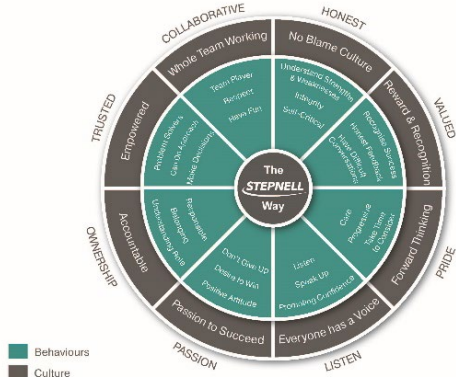


Interserve Construction Limited I-Care
and Mental Health First Aid Initiatives

Organisation:
Interserve Construction Limited

Region:
Yorkshire & Humber

Headline Sponsor

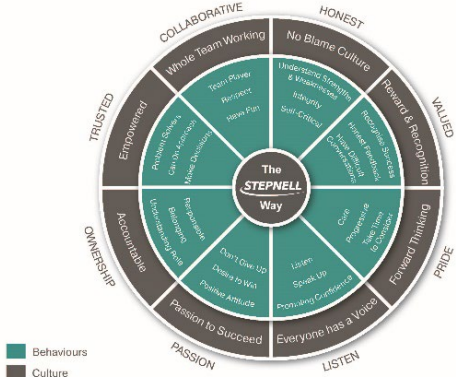


Stepnell Limited

Organisation:
STEPNELL LIMITED

Region:
West Midlands

[Click here for more information](#)



Stepnell

Organisation:
STEPNELL

Region:
East Midlands

[Click here for more information](#)



STA Assure Membership and Quality
Standards Scheme Incorporating Site
Safe Policy

Organisation:
Structural Timber Association

Region:
South West

[Click here for more information](#)

HEALTH, SAFETY
& WELLBEING



Liverpool Waters

Organisation:
Safer Sphere

Region:
North West



Delivering Safely together

Organisation:
Kier Highways, Highways England (Client),
Jacobs Atkins Joint Venture (JAJV)

Region:
London & South East



Interserve Construction Limited
I-Care and Mental Health First Aid
Initiatives.

Organisation:
Interserve Construction Limited

Region:
North East



Cardiff West Community High School

Organisations:
Willmott Dixon, Cardiff West Community High
School, Cardiff Council (Client), Powell Dobson

Region:
Wales



Headline Sponsor

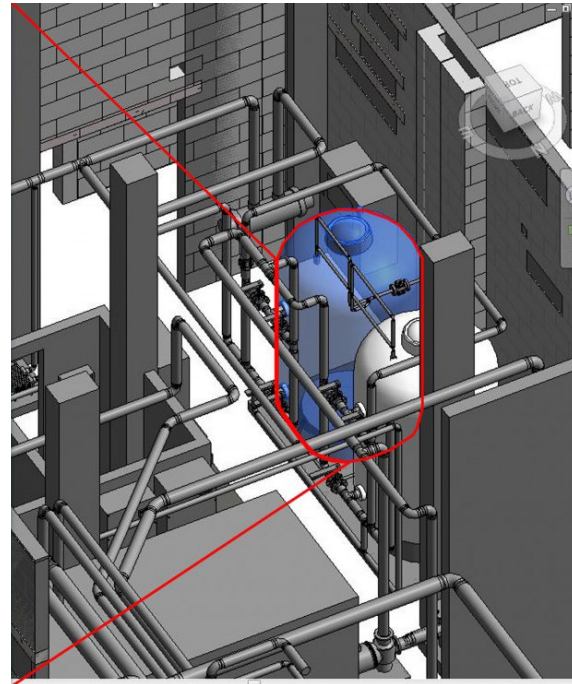
[Click here for more information](#)

[Click here for more information](#)

[Click here for more information](#)

[Click here for more information](#)

INNOVATION



Utilising BIM within the building operational phase

Organisations:

One Creative Environments Ltd. (One), BESA, Northumbria University

Region:

West Midlands

[Click here for more information](#)



Rightsizing : Slim Down and start up. 2 new housing schemes in Monmouthshire

Organisations:

Monmouthshire Housing Association, Design Research Unit Welsh School of Architecture, Cardiff University, AECOM, LRM Planning, Lodestone Consulting Engineers,

Region:

Wales

[Click here for more information](#)



Keystone Group – Keyhouse

Organisations:

Keystone Group, Keystone Lintels, KeyHouse, SmartRoof, IG Elements, IG Masonry Support

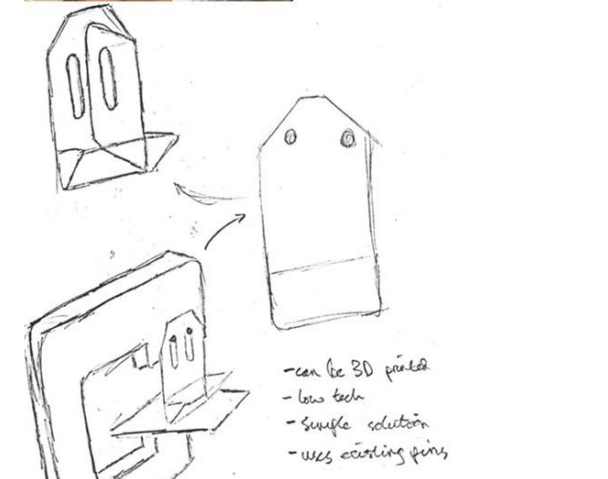
Region:

East Midlands

[Click here for more information](#)



As a team we are analysing areas that use on the band saw to our advantage retrofit. Then came up with different i as a team and decided upon the best



Innovative improvements to Band Saws

Organisations:

Morgan Lovell, Queen Elizabeth Boys School, Education Engineering Scheme

Region:

London & South East

[Click here for more information](#)



Category Sponsor



Headline Sponsor

INNOVATION



Agile in Buildings

Organisations:

Ollio – The Building Performance Consultancy, DLA Design, Playwerks, Copper Candle, Innovate UK

Region:

Yorkshire & Humber

[Click here for more information](#)



Hercules Construction Jobs – Unique mobile recruitment app

Organisations:

Hercules Site Services Ltd

Region:

South West

[Click here for more information](#)



Gateshead Innovation Village

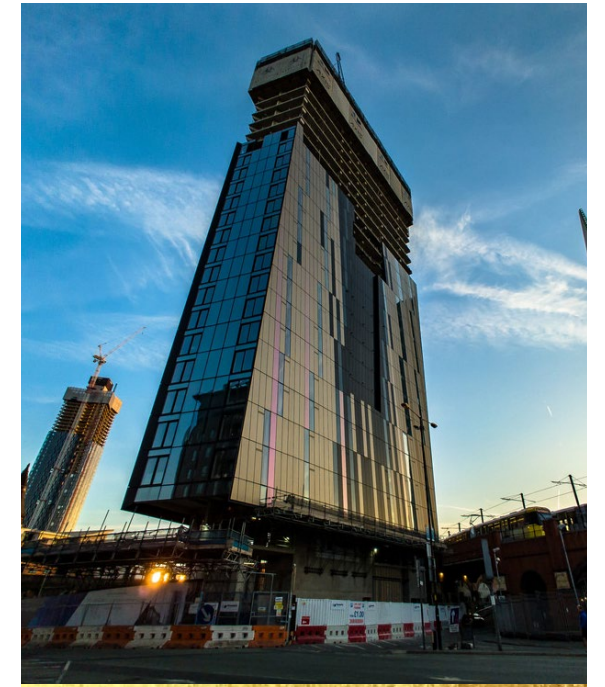
Organisations:

ENGIE Regeneration Ltd & Home Group, Home Group (CLIENT), Elliott Associates, ID Partnership

Region:

North East

[Click here for more information](#)



Axis Tower Manchester

Organisations:

Russell WBHO, Jon Matthews Architects, WSP, Property Alliance Group (CLIENT)

Region:

North West

[Click here for more information](#)



Category Sponsor



Headline Sponsor

INNOVATION

MMC

 SocialValue Calculator



Modern Methods Social Value Calculator

Organisations:
Kier, Social Profit Calculator, Akerlof, Pagabo, Rider
Levett Bucknall

Region:
East of England

 [Click here for more information](#)



Category Sponsor



Headline Sponsor

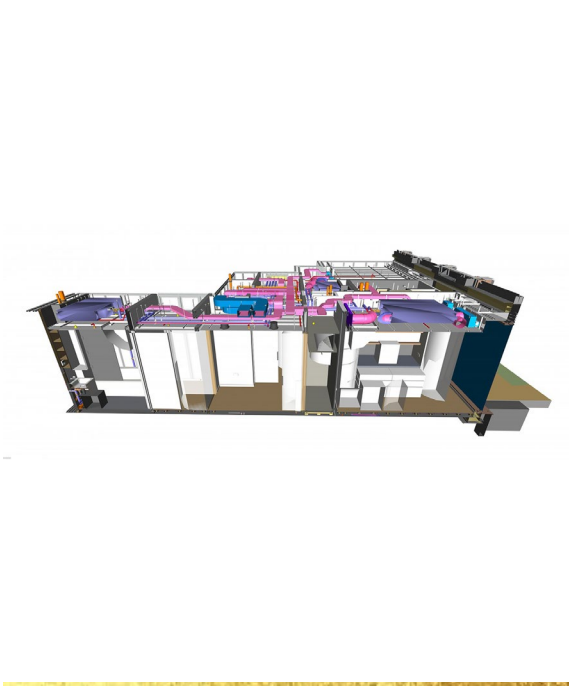
DIGITAL
CONSTRUCTION



Outpost – secure Internet Access
for the digital contractor

Organisation:
Trench Networks Limited

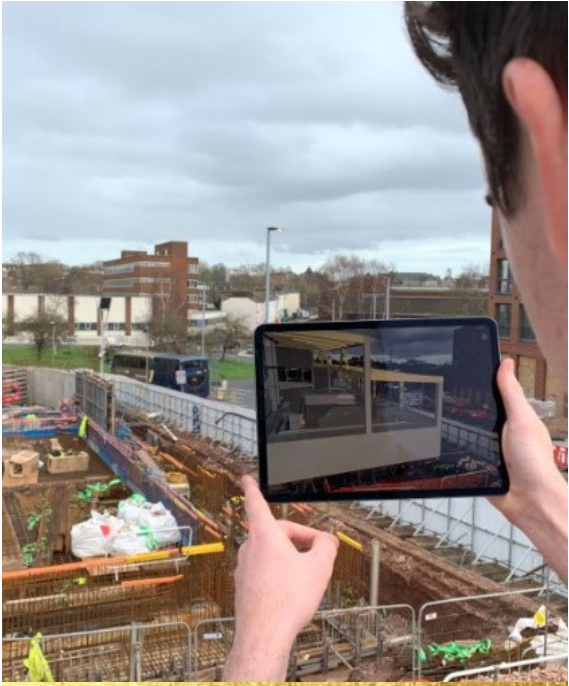
Region:
North East



One Creative Environments Ltd. (One)
“The Virtual Mock-Up”

Organisation:
One Creative Environments Ltd. (One),
Multiplex (Client)

Region:
West Midlands



St Sidwell’s Point Leisure Centre

Organisation:
Kier Construction Western and Wales,
Exeter City Council (Client)

Region:
South West



MMU Arts & Humanities Building

Organisations:
Morgan Sindall Construction, Manchester
Metropolitan University, Allies & Morrison, Arup,
Turner & Townsend, Charcoal Blue, Drama by
Design, SRL

Region:
North West



Headline Sponsor

[Click here for more information](#)

[Click here for more information](#)

[Click here for more information](#)

[Click here for more information](#)

DIGITAL
CONSTRUCTION

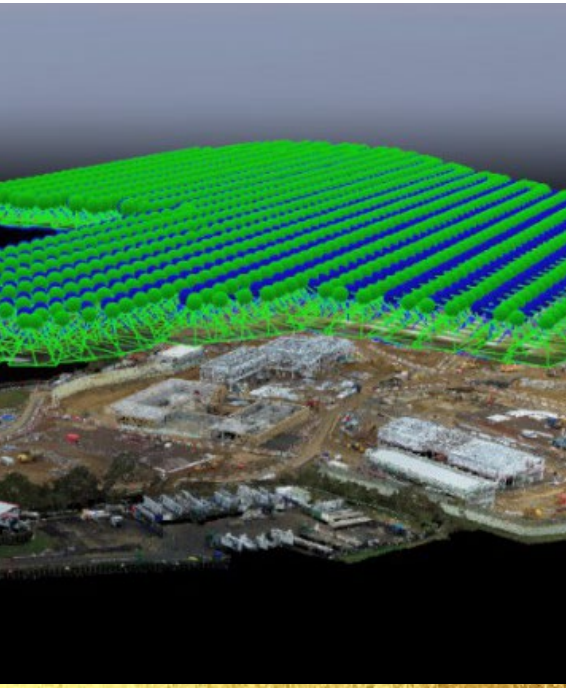


The Grange University Hospital

Organisation:
Laing O’Rourke, Aneurin Bevan University Health Board, BDP, WSP, AECOM

Region:
Wales

[Click here for more information](#)

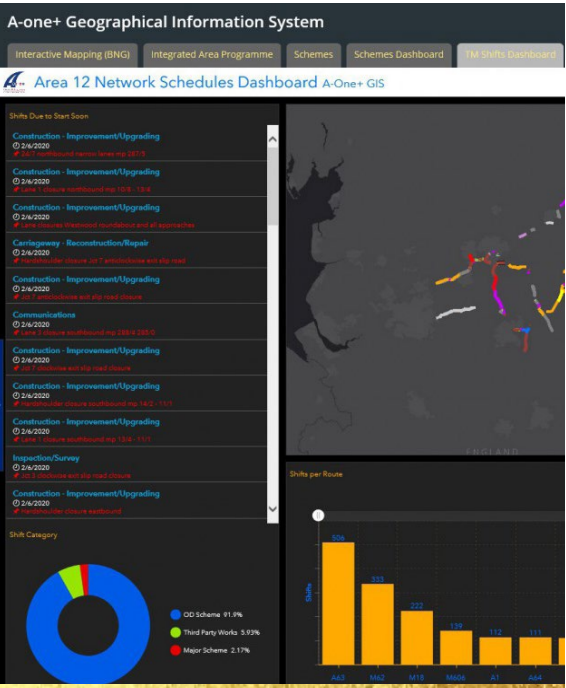


New Build Prison at Wellingborough

Organisations:
Kier, Ministry of Justice, FP McCann, PCE, Bison Precast, Curtins, Banagher Precast Concrete, ASSA ABLOY

Region:
East Midlands

[Click here for more information](#)



Area 12 GIS Integrated Area Programme

Organisations:
A-one+, Miso, Highways England

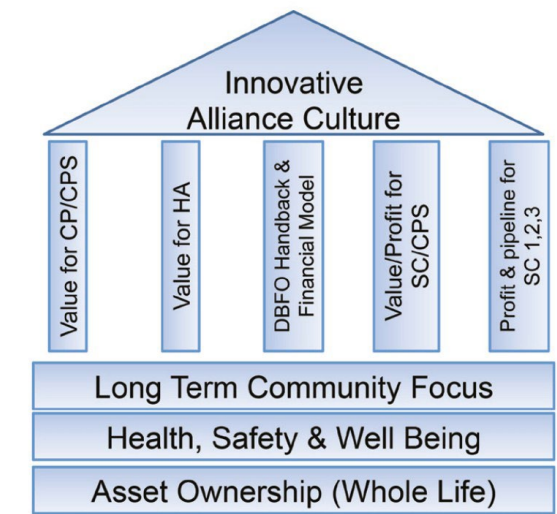
Region:
Yorkshire & Humber

[Click here for more information](#)



Headline Sponsor

VALUE



The core underpinning principles and rewards of the arrangement.



**Weekend Wonder-Shifts:
Transforming delivery of joint
replacement schemes**

Organisations:
Jackson Civil Engineering, Maurer, Martins (TM)

Region:
London & South East

**Hull York Medical School –
York Campus**

Organisations:
Interserve, University of York, Faithful & Gould,
Wm Saunders Architects

Region:
Yorkshire & Humber

Frederick Douglass Centre

Organisations:
Sir Robert McAlpine, Newcastle University,
Newcastle City Council, Faithful + Gould, Sheppard
Robson, Arup, Gillespies, Sandy Brown Associates,
BIM Technologies, DESCO – BREEAM

Region:
North East

**Swansea Council Active
Travel Programme**

Organisations:
City and County of Swansea

Region:
Wales



Headline Sponsor

[Click here for more information](#)

[Click here for more information](#)

[Click here for more information](#)

[Click here for more information](#)

VALUE



Shire Hall – Value

Organisations:
Kier Construction Central, Quattro Design Architects, Adams Fletcher & Partners

Region:
South West



The Knowledge Quad

Organisations:
Morgan Sindall, Liverpool City Council, Knowledge Quarter Liverpool

Region:
North West



Headline Sponsor

[!\[\]\(d3102649f02e825ddb76dc3de0190154_img.jpg\) Click here for more information](#)

[!\[\]\(4b7a79268f6ba26c1471d4232fffa85a_img.jpg\) Click here for more information](#)

SME OF THE YEAR



Category Sponsor



Headline Sponsor



Encon Construction Ltd

Organisation:
Encon Construction

Region:
Wales

[Click here for more information](#)



LK Group

Organisation:
LK Group

Region:
North West

[Click here for more information](#)



ARC Building Solutions Ltd

Organisation:
ARC Building Solutions

Region:
Yorkshire & Humber

[Click here for more information](#)



Salus Approved Inspectors

Organisation:
Salus Approved Inspectors

Region:
East Midlands

[Click here for more information](#)

SME OF THE YEAR



Category Sponsor



Headline Sponsor



Probuild360

Organisation:
Probuild360

Region:
West Midlands

[Click here for more information](#)



Novium Architects

Organisation:
Novium Architects

Region:
London & South East

[Click here for more information](#)



Identity Consult

Organisation:
Identity Consult

Region:
North East

[Click here for more information](#)



Hercules Site Services Ltd

Organisation:
Hercules Site Services Ltd

Region:
South West

[Click here for more information](#)

CLIENT OF THE YEAR



Scale: reversing the benefits of large

Organisation:
Sutton Housing Society

Region:
London & South East



Newcastle University

Organisations:
Sir Robert McAlpine, Newcastle University

Region:
North East



Nationwide Building Society

Organisation:
Nationwide Building Society

Region:
South West



Ministry of Justice for
Wellingborough Prison

Organisations:
Kier Construction, Ministry of Justice

Region:
East Midlands



Headline Sponsor

[Click here for more information](#)

[Click here for more information](#)

[Click here for more information](#)

[Click here for more information](#)

CLIENT OF THE YEAR



Manchester Metropolitan University

Organisations:
Morgan Sindall Construction, Manchester Metropolitan University

Region:
North West



Maggie's Cardiff

Organisation:
Maggie's

Region:
Wales



Highways England Routes to Market: 21st Century Highways

Organisations:
Turner & Townsend, Highways England

Region:
West Midlands



Calderdale and Huddersfield Solutions Limited

Organisations:
Interserve, Calderdale and Huddersfield Solutions Limited

Region:
Yorkshire & Humber



Headline Sponsor

[Click here for more information](#)

[Click here for more information](#)

[Click here for more information](#)

[Click here for more information](#)

OFFSITE PROJECT OF THE YEAR



Why is the time right for offsite in a challenging housing market?

Organisations:

South West Procurement Alliance (SWPA): Magna, Rollalong Ltd, SWPA, Complex Asset Management Solutions Ltd (CAMS)

Region:

South West



Totally Modular Pilot Scheme for Citizen Housing

Organisations:

Totally Modular, Citizen Housing

Region:

West Midlands



University Hospital of North Tees – Energy Centre

Organisations:

NG Bailey, NTH Solutions LLP, P+HS, Currie & Brown, RPS, Interserve

Region:

Yorkshire & Humber



New Build Prison at Wellingborough

Organisation:

Kier, Ministry of Justice, PCE, FP McCann, Bison Precast, Banagher Precast, Curtins

Region:

East Midlands



Headline Sponsor

[Click here for more information](#)

[Click here for more information](#)

[Click here for more information](#)

[Click here for more information](#)

OFFSITE PROJECT
OF THE YEAR

Photos	Item Name	Family in 3D	Photos
	7- Portal Steel Frame		
	8- Door sets		
	9- Cassette type (VRF Indoor Unit)		
	10- Combined lighting and acoustic raft with fire alarm, smoke, CO2 and Wifi		
	11- Natural Ventilation with Heat Exchanger (NVHR)		

Manufacturing Led Construction

Organisation:

Mid Group

Region:

London & South East



The Grange University Hospital

Organisations:

Laing O'Rourke, Aneurin Bevan University Health Board, BDP, WSP, AECOM

Region:

Wales



Gateshead Innovation Village

Organisations:

ENGIE Regeneration Ltd and Home Group, Elliott Associates, ID Partnership

Region:

North East



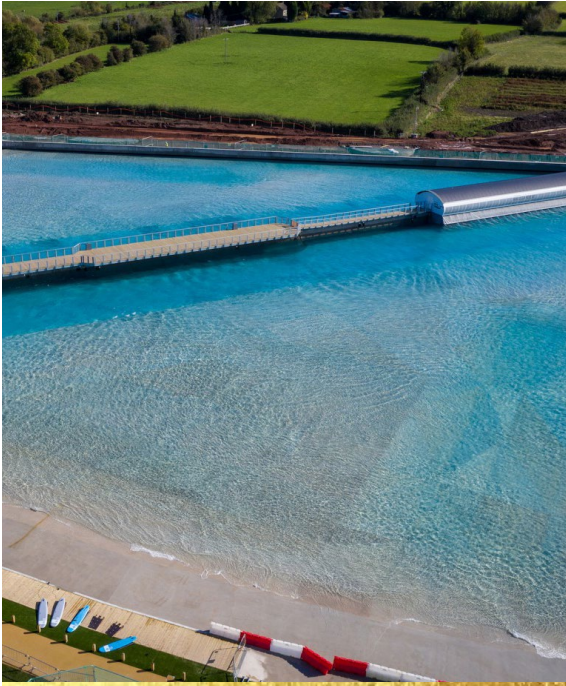
Headline Sponsor

[Click here for more information](#)

[Click here for more information](#)

[Click here for more information](#)

CIVILS PROJECT
OF THE YEAR



The Wave, Bristol

Organisations:
Andrew Scott Limited, Hydrock, APG Architecture,
Ward Williams Associates

Region:
South West



St Athan Northern Access Road

Organisation:
Alun Griffiths (Contractors) Ltd, Welsh
Government (Client), Burroughs, TACP, AECOM

Region:
Wales



Springhead Bridge

Organisations:
Balfour Beatty, Ebbsfleet Development
Corporation, Arcadis

Region:
London & South East



Seahouses Main Pier

Organisations:
Royal HaskoningDHV, Balfour Beatty,
Northumberland County Council (Client)

Region:
North East

[Click here for more information](#)

[Click here for more information](#)

[Click here for more information](#)

[Click here for more information](#)

Category Sponsor

Headline Sponsor

CIVILS PROJECT
OF THE YEAR



Anlaby and East Ella Flood Alleviation
Scheme (AEEFAS)

Organisations:

East Riding of Yorkshire Council, Mason Clark
Associates, Pell Frischmann, Cowi, nmcn, Colas
Siac, PBS

Region:

Yorkshire & Humber

[Click here for more information](#)

BUILDING PROJECT
OF THE YEAR



Three Snowhill

Organisations:
Ballymore, Gleeds, BAM Construction, Sidell Gibson Architects, Cundall, Weedon Architects, M&G, WSP

Region:
West Midlands

[Click here for more information](#)



The Catalyst

Organisations:
Bowmer & Kirkland, Newcastle University, Turner & Townsend, GSS Architecture, Design North, Gillespies, Studio Horn, Desco, NGBailey, JD Pierce, Charles Henshaw & Sons, Beal Architectural, BIMBox

Region:
North East

[Click here for more information](#)



Shire Hall

Organisations:
Kier Construction Central, Quattro Design Architects, Adams Fletcher & Partners

Region:
South West

[Click here for more information](#)



Lymington Fields School

Organisations:
Mid Group, London Borough of Barking & Dagenham, Bond Bryan, Price & Myers, EDP, O'Keefes, Innovare, Greenside Integrated Services

Region:
London & South East

[Click here for more information](#)



Category Sponsor



Headline Sponsor

BUILDING PROJECT
OF THE YEAR



De Montfort Mews Student Accommodation, Leicester

Organisations:
MAS Architecture Limited, Zone Developments, Stepnell Limited, DH Consultant Engineering, Omega Fire Engineering Limited, HSP Consulting, Salus, PRP Leicester

Region:
East Midlands

[Click here for more information](#)



Clatterbridge Cancer Centre, Liverpool

Organisations:
Clatterbridge Cancer Centre NHS Foundation Trust, BDP, Laing O'Rourke, Aecom

Region:
North West

[Click here for more information](#)



Plot 6 & 7, Central Square – UK Government Regional Hub

Organisations:
Sir Robert McAlpine, Gensler, Arup, Legal & General, HMRC, Rightacres Property (CLIENT)

Region:
Wales

[Click here for more information](#)



Moxy Hotel, York

Organisations:
Simpson (York) Limited, VASTINT, Faithful & Gould, Cumming & Co, RSP Engineers, Fairhurst

Region:
Yorkshire & Humber

[Click here for more information](#)



Category Sponsor



Headline Sponsor

2020 JUDGES



Adam Sanford

Alex Small

Alison Nicholl

Andrew Arundel

Bex Hodgson-Jones

Bill Hill

Caroline Key

Charles Mills

Chris Goodier



Dan Rossiter

Derek Thomson

Duncan Reed

Gilli Hobbs

Ian Nicholson

Irina Korneychuk

Jackie Casey

Joanna Chomeniuk

John Orrell



Kevin Thomas

Marcus Harling

Mark Beirne

Nick Deeming

Odilon Serrano

Peter Demian

Phil Lloyd

Rebecca Rees

Robert Hirst



Robert Illes

Robby Soetanto

Roy Casey

Simon Murray

Steve Baker

Steve Williams

Tom Oulton

Vince Hanley

Vivien Chow



Headline Sponsor



THANK YOU TO ALL OUR SPONSORS

Swegon



breACADEMY®

National
Association
Construction
Frameworks
By the public sector,
For the public sector



Headline Sponsor

Swegon

29 January 2021

constructingexcellence.org.uk