

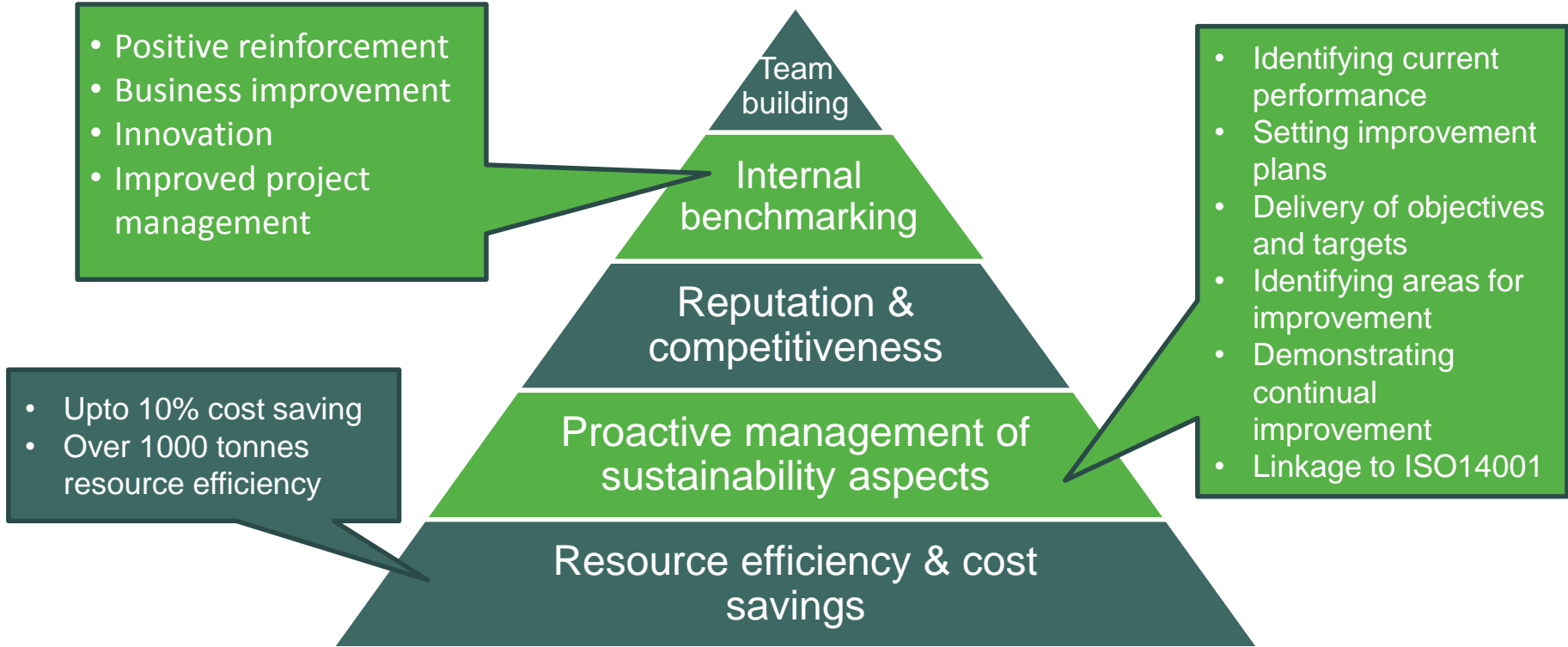
# Providing an evidence base of responsible sourcing for certified infrastructure projects

Ian Nicholson Director, CEEQUAL & Infrastructure



- Background to CEEQUAL
- Review of current RS scoring
- Insights and challenges
- RS in CEEQUAL (2018)





## Objective

Bring together the best elements of CEEQUAL V5 and BREEAM Infrastructure (Pilot)

CEEQUAL process

BREEAM style criteria

Scoping

Verifiers

Award types

More metrics

Removing ambiguity

Maintaining flexibility of application

## Progress

Bring together the best elements of CEEQUAL V5 and BREEAM Infrastructure (Pilot)

Rebranded



**BREEAM**<sup>®</sup>  
INFRASTRUCTURE  
delivered by bre



**CEEQUAL**  
delivered by bre

Launched – Pre-  
registration  
process

Currently  
developing  
technical criteria

Public  
consultation  
early 2019

Launch Spring  
2019

## **MAT03**

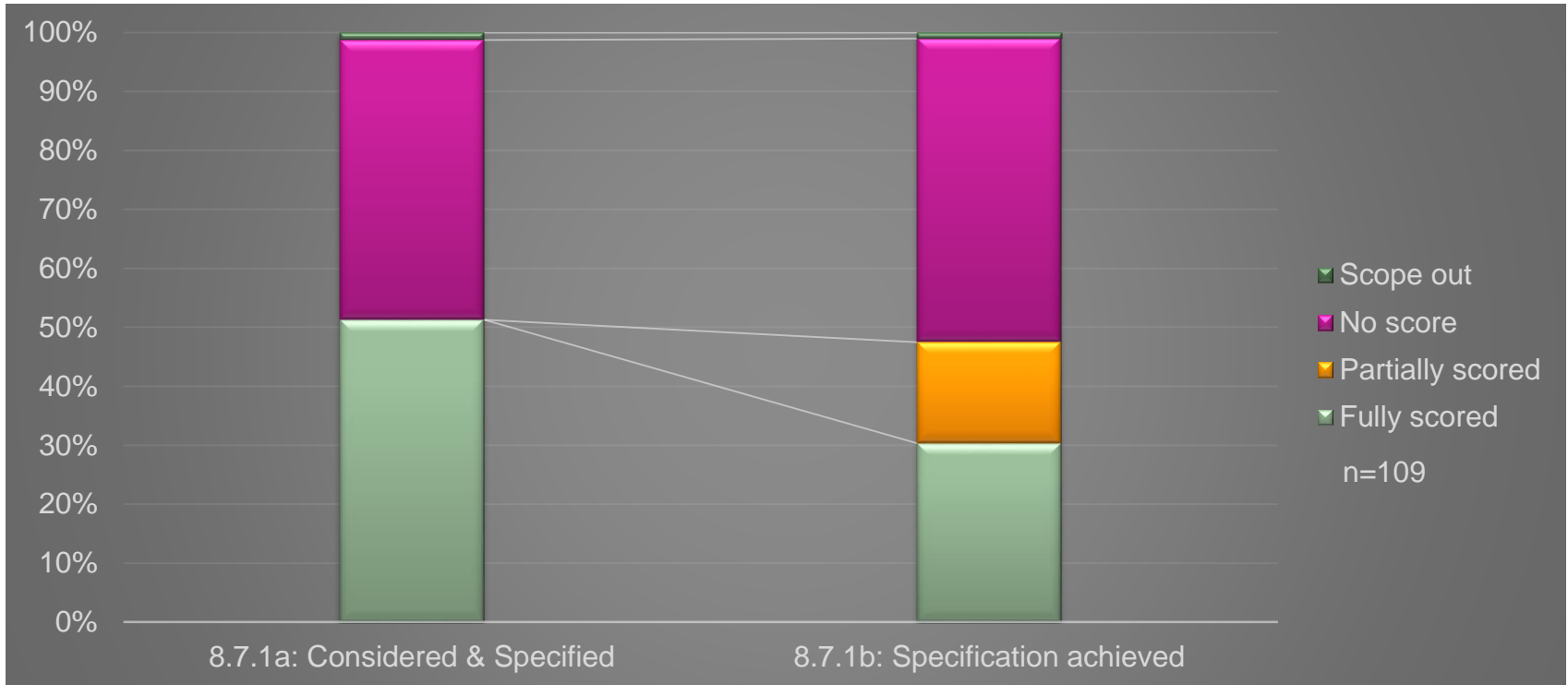
- Legal sourcing (pre-requisite)
  - Sustainable procurement plan developed by Principal Contractor
  - RS of permanent works
  - RS of temporary works
- } Credits allocated on % of components covered by approved RS schemes.

8.7.1.a: RS considered and specified before placing order

8.7.1.b: To what extent specification is achieved

- Client requirements for local sourcing & recycled materials
- Sourcing of timber – permanent and temporary works

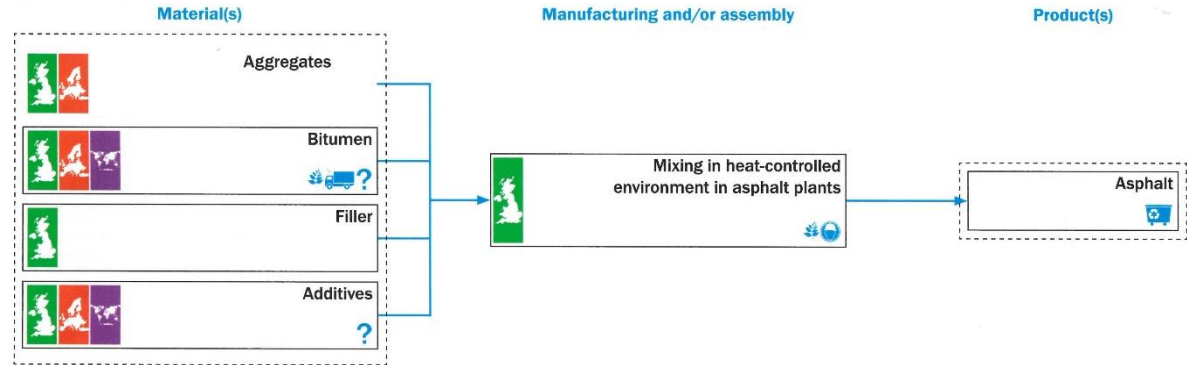




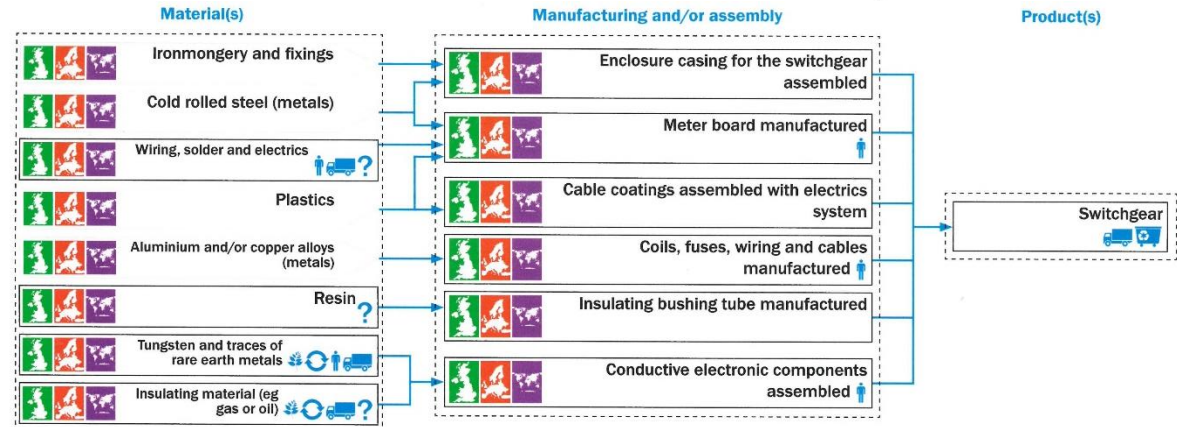


# Risk/supply chain complexity

## Asphalt

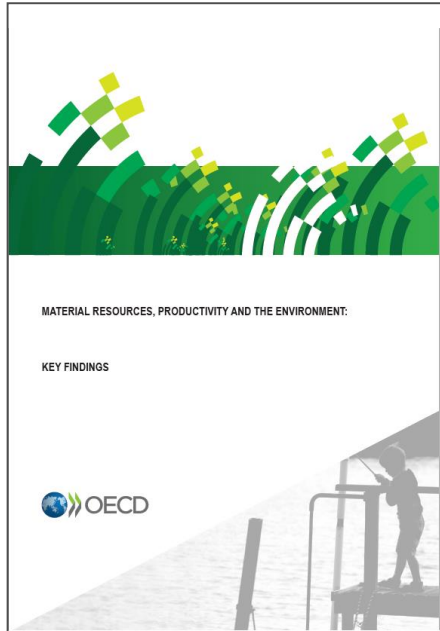


## Switchgear



**Table 1. Economic and environmental significance of selected materials and products**

Selected Material/Product	Environmental Significance	Economic Significance
<i>Aluminium</i>	<ul style="list-style-type: none"> <li>◆ Lightweight (transportation fuel efficiency)</li> <li>◆ Infinitely recyclable</li> <li>◆ Energy intensive production (GHG emissions)</li> <li>◆ Solid waste (red mud)</li> </ul>	<ul style="list-style-type: none"> <li>◆ Widely used esp. in transportation, construction, electricity generation</li> <li>◆ Increasing global demand</li> <li>◆ Price volatility</li> <li>◆ Consumption strongly coupled with economic growth</li> </ul>
<i>Copper</i>	<ul style="list-style-type: none"> <li>◆ Infinitely recyclable</li> <li>◆ Energy-intensive production</li> <li>◆ E-waste</li> </ul>	<ul style="list-style-type: none"> <li>◆ Widely used esp. in electrical transmission and construction</li> <li>◆ Increasing global demand</li> <li>◆ Price volatility</li> </ul>
<i>Iron and Steel</i>	<ul style="list-style-type: none"> <li>◆ Infinitely recyclable</li> <li>◆ well-developed scrap markets</li> <li>◆ Energy-intensive production</li> </ul>	<ul style="list-style-type: none"> <li>◆ Most widely used and traded metal in the world</li> <li>◆ Increasing global demand</li> <li>◆ Price volatility</li> </ul>
<i>Rare Earth Elements</i>	<ul style="list-style-type: none"> <li>◆ Used in clean energy and energy efficiency technologies</li> <li>◆ Recycling extremely challenging</li> <li>◆ Chemically-intensive processing</li> <li>◆ E-waste</li> </ul>	<ul style="list-style-type: none"> <li>◆ Used in wide range of high-tech electronics</li> <li>◆ Lack of substitutes</li> <li>◆ Increasing global demand, recent supply chain issues</li> <li>◆ Price volatility</li> </ul>
<i>Phosphorus</i>	<ul style="list-style-type: none"> <li>◆ Eutrophication</li> <li>◆ Waste (phosphogypsum) and emissions (fluorine)</li> <li>◆ Recyclable (with losses)</li> </ul>	<ul style="list-style-type: none"> <li>◆ Food security</li> <li>◆ Supports agricultural production</li> </ul>
<i>Paper</i>	<ul style="list-style-type: none"> <li>◆ Renewable / recyclable (with losses)</li> <li>◆ Carbon sequestration, habitat (forests)</li> <li>◆ Potential source of energy (wood biomass)</li> <li>◆ Energy- and water-intensive production</li> </ul>	<ul style="list-style-type: none"> <li>◆ Demand growing esp. in emerging economies</li> <li>◆ Wide variety of products</li> </ul>



50% of projects don't currently consider RS.



How do we raise the importance of RS?

Have we got the 80/20 rule the wrong way round?



Are we focussed on where the real risk is?

Wider scope of certifications needed



How do we incentivise suppliers?

Construction is not the primary customer for complex products



Can we utilise more generic schemes?

## Some initial thoughts...



# Thank you

CEEQUAL Ltd  
Watford, UK  
WD25 9XX  
+44 (0) 333 014 7880  
[enquiries@ceequal.com](mailto:enquiries@ceequal.com)  
[www.ceequal.com](http://www.ceequal.com)

Ian Nicholson  
  
+44 (0) 1923 664409  
+44 (0) 7951 540062  
  
[ian.nicholson@ceequal.com](mailto:ian.nicholson@ceequal.com)