



Prof Jacqueline Glass

School of Civil & Building Engineering, Loughborough University

@profjacquiglass





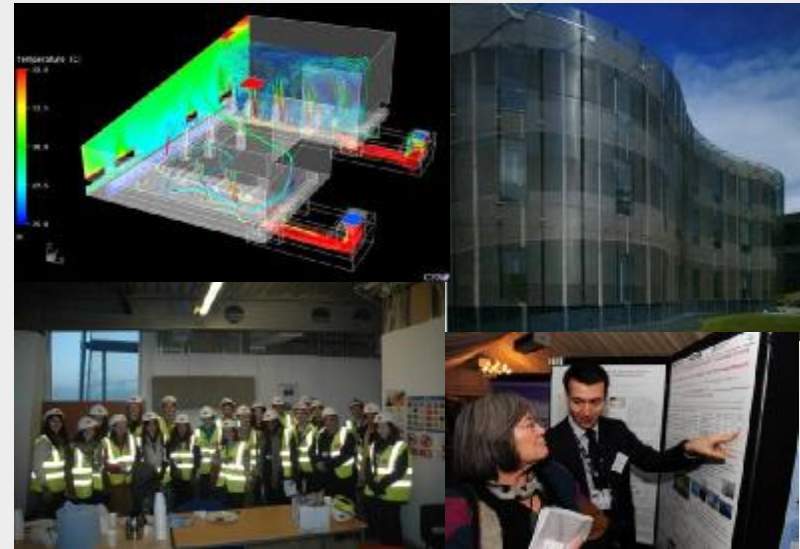
Loughborough
University

The value of industry input in teaching and research



School of Civil and Building Engineering

- One of 10 Schools
- Over 100 years old
- 70 academic staff
- >150 researchers
- >1k students
- c.£20m research projects
- >250 industry partners



Some of our collaborators

- AECOM
- Aggregate Industries
- Atkins
- Balfour Beatty
- BRE
- Buro Happold
- CH2M Hill
- Construction Skills
- Costain
- E.On
- Galliford Try
- Mitsubishi Electric
- NHS
- SE Controls Ltd
- Severn Trent Water
- Skanska
- Structherm
- Tesco
- Vinci Construction
- Willmott Dixon

FOUR EXAMPLES

Action Programme for Responsible & Ethical Sourcing (APRES)

- Research
- Networking
- >350 members
- Resources
- Signposting
- apres.bre.co.uk



CICE



- £12m EPSRC grants
- £3.5m industry cash and £7m in-kind
- 151 innovation projects with 100+ companies
- 80 highly skilled leaders including: 1 Associate; 15 Directors; 2 Heads of sections; 2 lead engineers and 14 senior consultants/engineers/managers.
- 150+ journal papers, 200+ conference papers; 90 other publications (government bodies, British Standards, learned societies and professional bodies).
- 10 awards, 3 patents, 37 redesigned processes, 21 new systems, 10 prototypes, 11 frameworks, and 10 toolkits so far...

BERG

- Building energy performance group
- EPSRC London-Loughborough doctoral centre (LoLo)
- Six test houses
- Consultancy activity (e.g. DECC, BEIS, National Trust)



Building & Industrial Services Pipework Academy (BISPA)



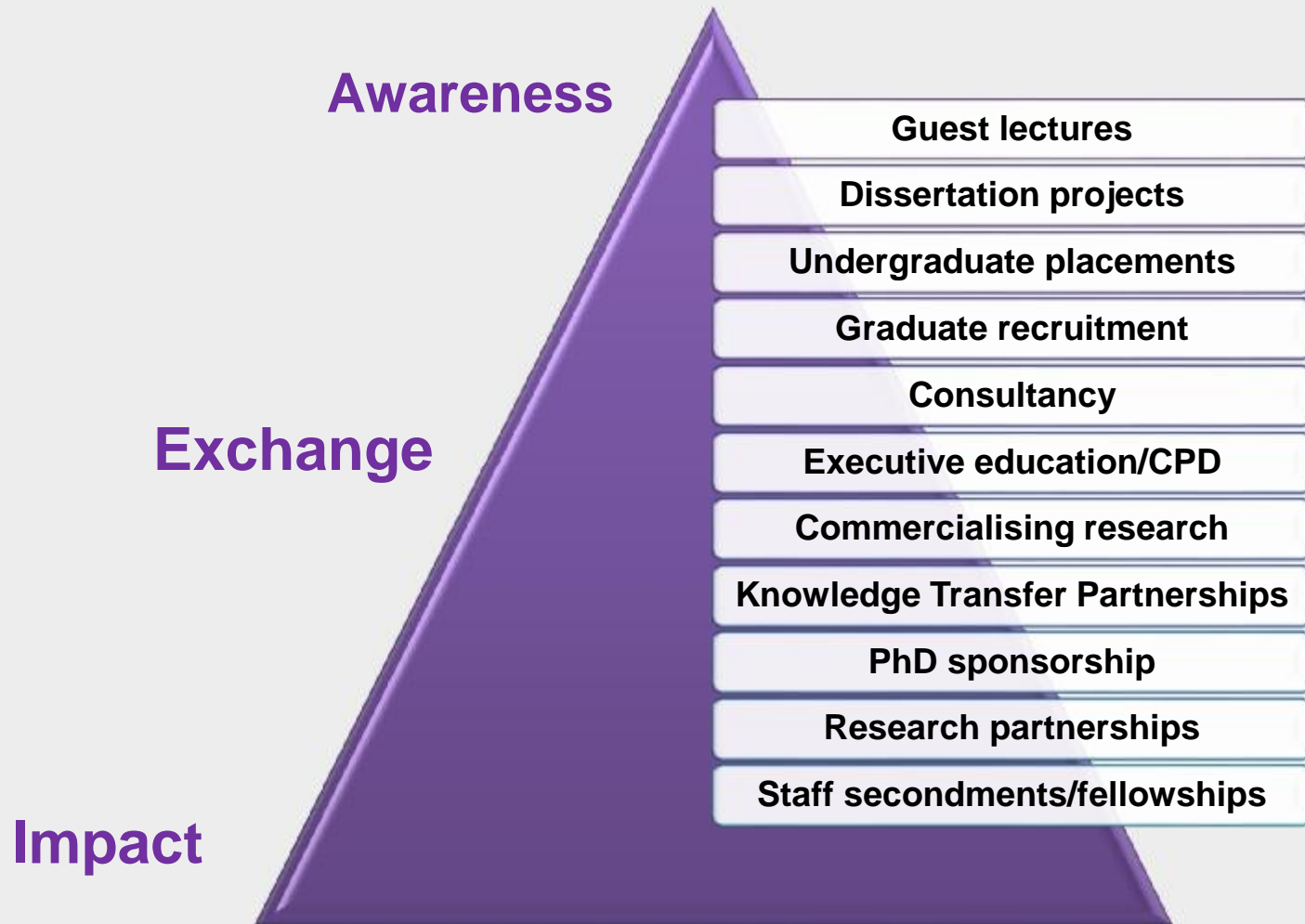
TWO MODELS



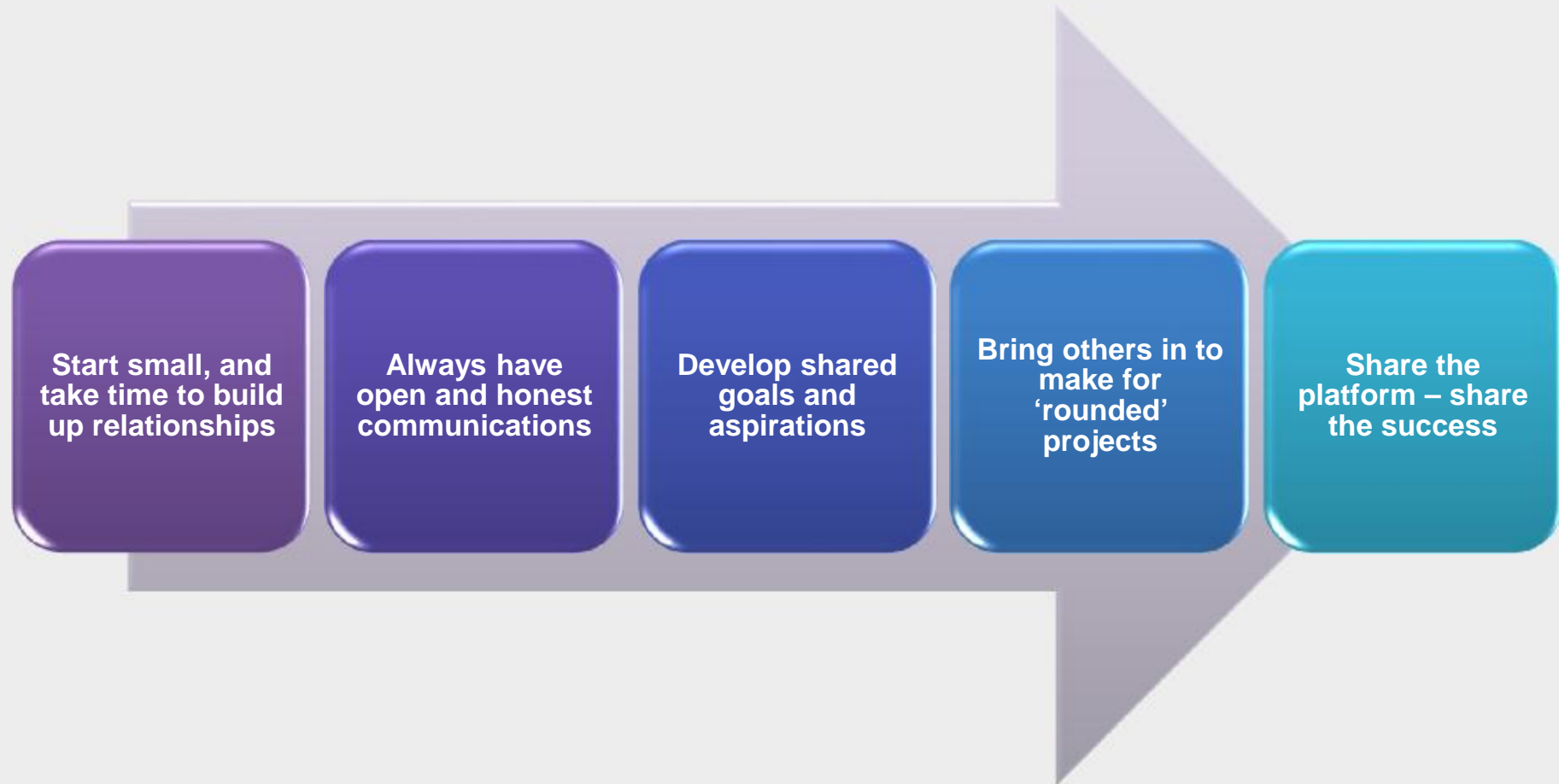
Loughborough
University

.....
#InspiringWinners since 1909

The input-trust iceberg



The collaboration journey





Loughborough
University

The value of industry input in teaching and research

